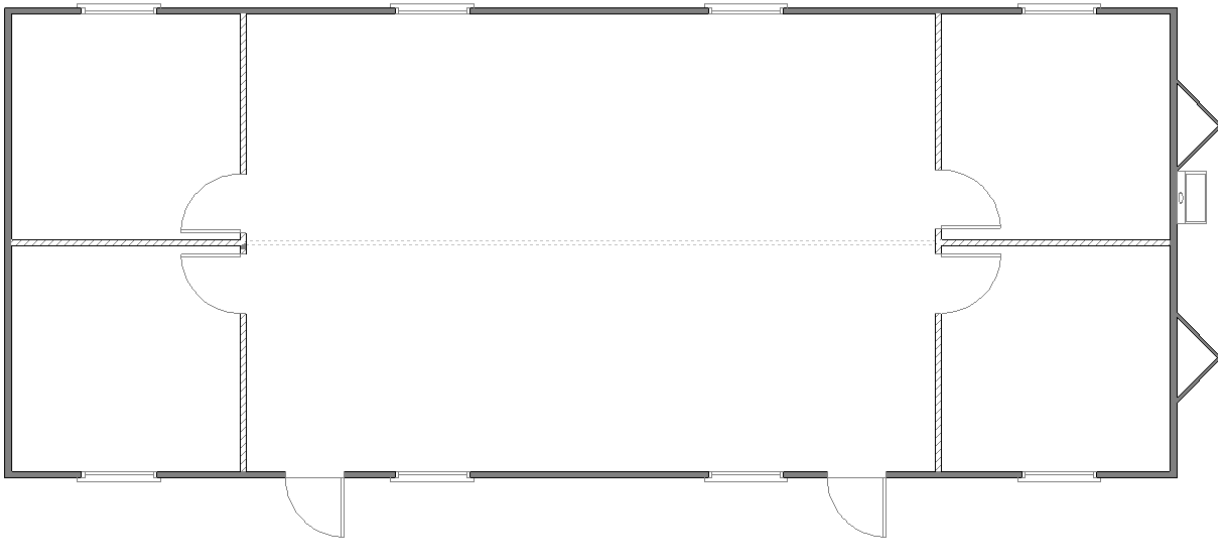


Floor Plan:

## 24'x60' Office

Floor plans may vary according to building model, size and specifications.  
Interior partitioning is optional and fully customizable.



Optional interior walls shown and may include additional costs.

### SPECIFICATIONS:

- Central heat and air systems
- Commercial grade carpet and tile floors
- Vinyl wrap interior walls
- Metal entry doors with deadbolts
- Acoustical sound dampening ceilings
- Built to the state commercial building code