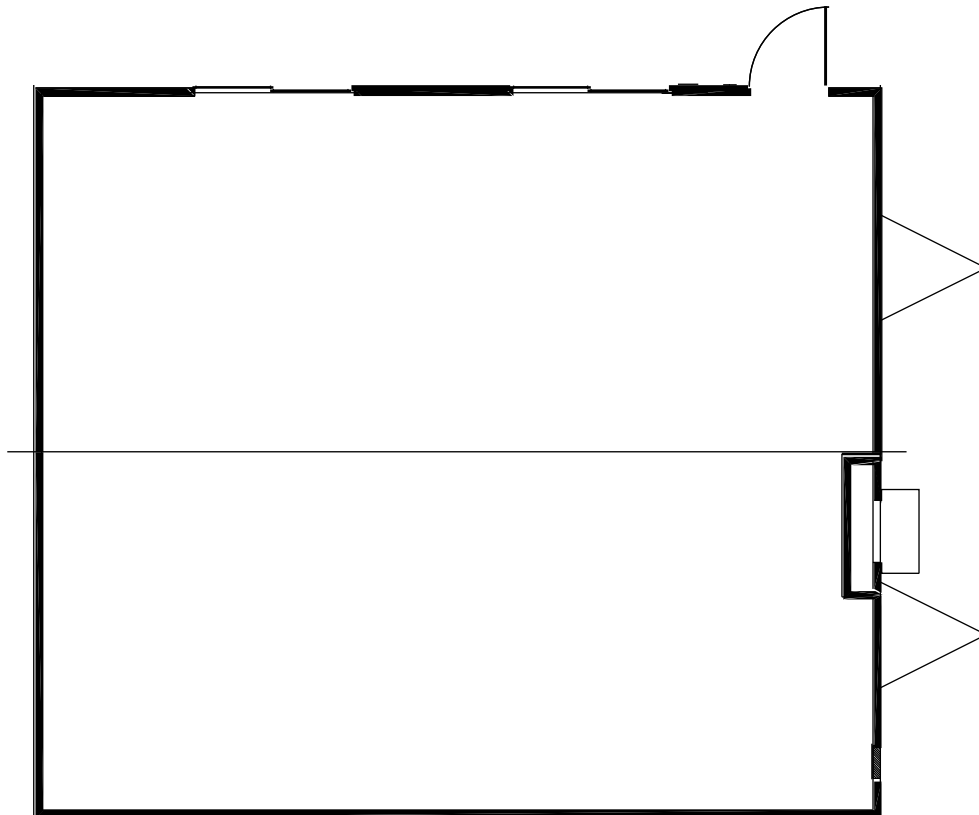


Floor Plan:

28'x32' Classroom

Floor plans may vary according to building model, size and specifications.
Interior partitioning is optional and fully customizable.



SPECIFICATIONS:

- Central heat and air systems
- Commercial grade carpet and tile floors
- Vinyl wrap interior walls
- Metal entry doors with deadbolts
- Acoustical sound dampening ceilings
- Built to the state commercial building code