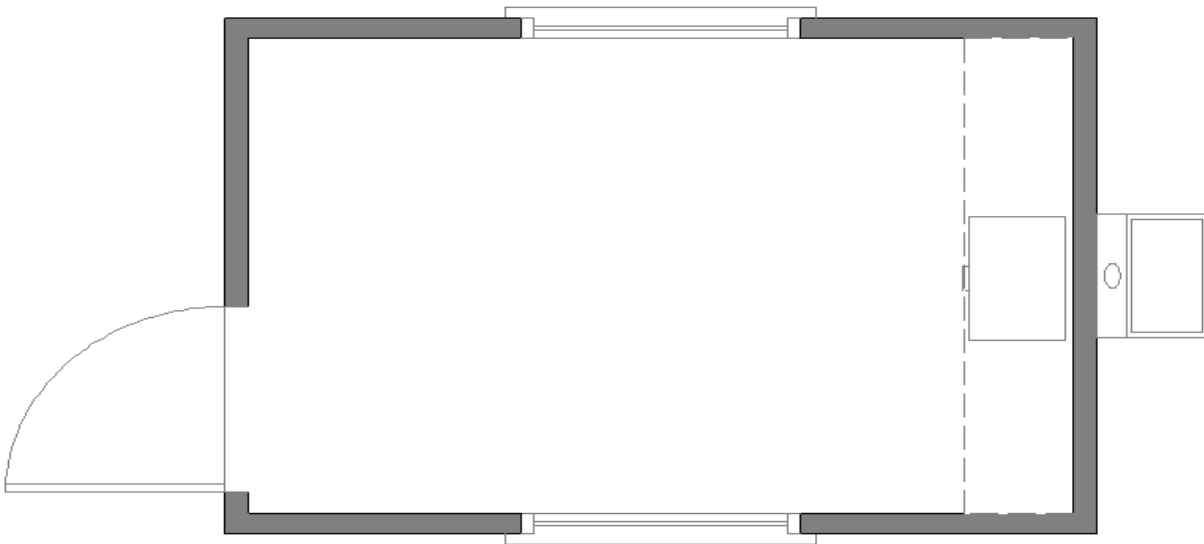


Floor Plan:

## 8'x12' Skidmount

Floor plans may vary according to building model, size and specifications.  
Interior partitioning is optional and fully customizable.



### SPECIFICATIONS:

- Heating and air conditioning
- Commercial grade carpet and tile floors
- Vinyl wrap interior walls
- Metal entry doors with deadbolts
- Acoustical sound dampening ceilings
- Built to the state commercial building code