

SAGE Campus

Campus design can be expanded and contracted to meet the school's needs



Project Overview:

With aging buildings on many of our school campuses, districts are in need of healthier and better performing alternatives. Some need additional classrooms, but many find they need an entire campus, and fast. Pacific Mobile offers the SAGE Campus to do just that, with speed and ease and at a competitive price point.

Building on the award-winning and popular SAGE Classroom, pioneered by Pacific Mobile alongside Portland State University and Blazer Industries, the SAGE Campus offers all the benefits of the original SAGE Classroom across an entire school building and site. As such, it is designed on the principle that productive learning environments for students must begin with healthy spaces and materials.

The SAGE Campus is able to exceed today's increased requirements for air quality and ventilation in school buildings through its use of high-performance heating, ventilation and air-conditioning systems paired with energy recovery ventilation. This system is enhanced with passive strategies like operable clerestories, fans, and louvers to provide 100% fresh air to every classroom in the building. They do so while maintaining an acoustically quiet environment as well as reducing energy usage.

In addition, its modular construction ensures both quality workmanship and quick assembly while steel floor systems offer greater longevity. The building materials are also chosen for their low environmental impact. Lastly, the classroom focuses on natural daylighting by maximizing the amount and placement of glazing, the use of specialty filters and light enhancing paints and the inclusion of transparent floor panels. Generous light monitors in all public spaces ensure that not only classrooms but all spaces in the building enjoy the benefits of natural lighting to enhance learning and well-being for all students.

Highlights:

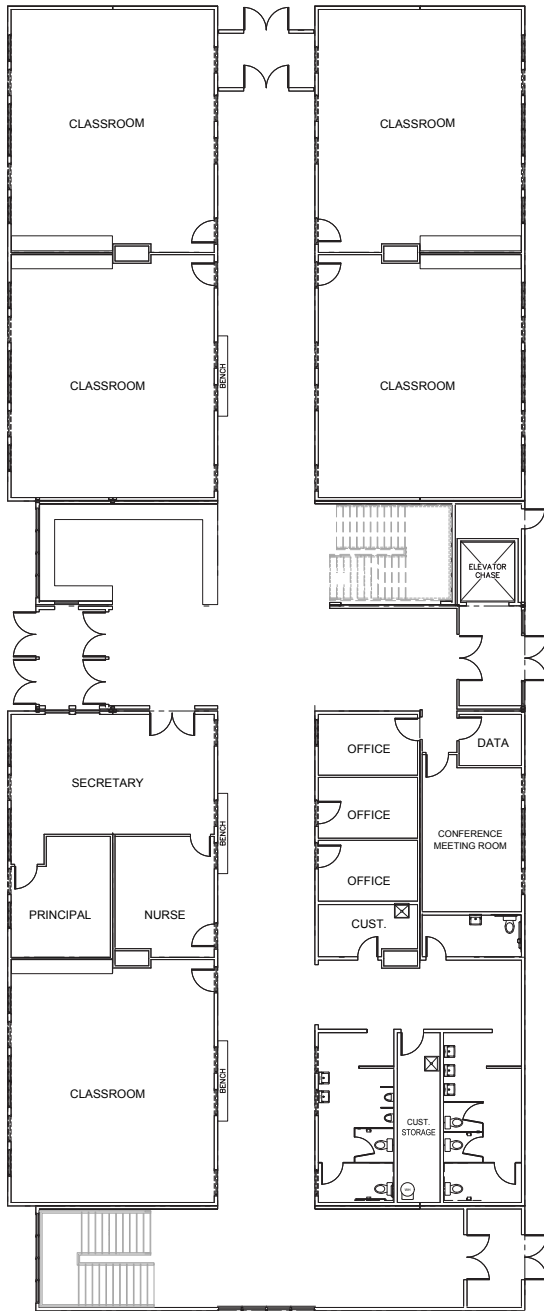
- Designed for enhanced learning efficiency
- High-performance heating, ventilation and air-conditioning systems
- 100% fresh air to every classroom
- Quality workmanship and quick assembly
- Exposed trusses, steel floors, and cork accent walls
- Low to no VOC building materials
- Glazing, specialty filters, light enhancing paints, and transparent floor panels for maximum natural daylighting
- Custom layout, configuration, and expandability options, including multipurpose gym/cafeteria building



SAGE Campus



1st Floor



2nd Floor

