

CENTRAL KITSAP SCHOOL DISTRICT: SILVERDALE ELEMENTARY

7,500-Square-Foot Sage School
Located In Silverdale, WA



Time to Complete: 21 days from delivery to occupancy

Project Overview:

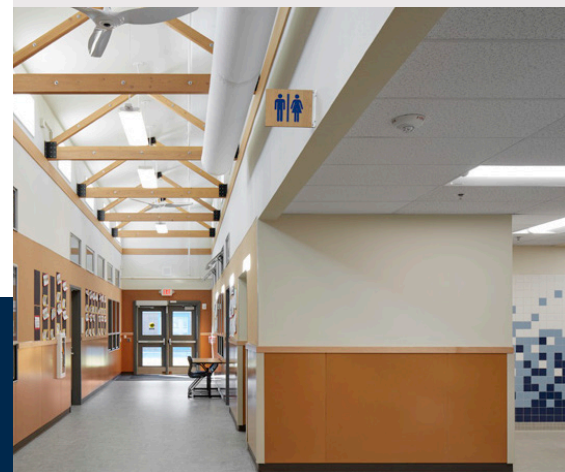
Silverdale Elementary lacked the space to accommodate the community's growing student enrollment and district leaders required a solution that would provide students with a high-quality, healthy learning environment quickly. **The solution:** a five classroom, 7,500 sq. ft. Smart Academic Green Environment (SAGE) school.

By combining the latest thinking in healthy learning environments with the best in green building practices, the SAGE classroom provides resource-efficiencies that improve the student experience and the bottom line for administrators. Features of the building include upgraded HVAC systems with energy recovery ventilation for healthier air, noise reduction and energy conservation, twice the amount of window square footage compared to standard relocatable classrooms, natural ventilation from operable windows and low-velocity fans, efficient mechanical and lighting system designs, and a unique 17-foot, light-filled corridor created from roof and floor modules. A white TPO roof refracts the sun to regulate interior temperatures for increased comfort and reduced energy costs. BioPCM, a phase-change material in the walls, reduces HVAC power consumption by 35 percent while maximizing energy savings.

The Silverdale Elementary SAGE school is the first of its kind, representing an evolution from SAGE classrooms to larger, more complex SAGE school buildings. In collaborative partnership with Portland State University and building manufacturer Blazer Industries, Pacific Mobile has installed more than 100 SAGE classrooms throughout WA and OR since 2013.

Highlights:

- Accommodates 125 students
- Custom 17-ft corridor with 28 clerestory windows for increased natural light
- Improved HVAC systems for healthier air, noise reduction and energy conservation by approx. 35%
- Low-velocity fans for increased ventilation and energy efficiency
- Cork, noise-abatement walls
- Non-toxic/low VOC building materials
- Steel floor structure for greater portability and reduced infrastructure
- Exceeds the Washington Sustainable Schools Protocol criteria

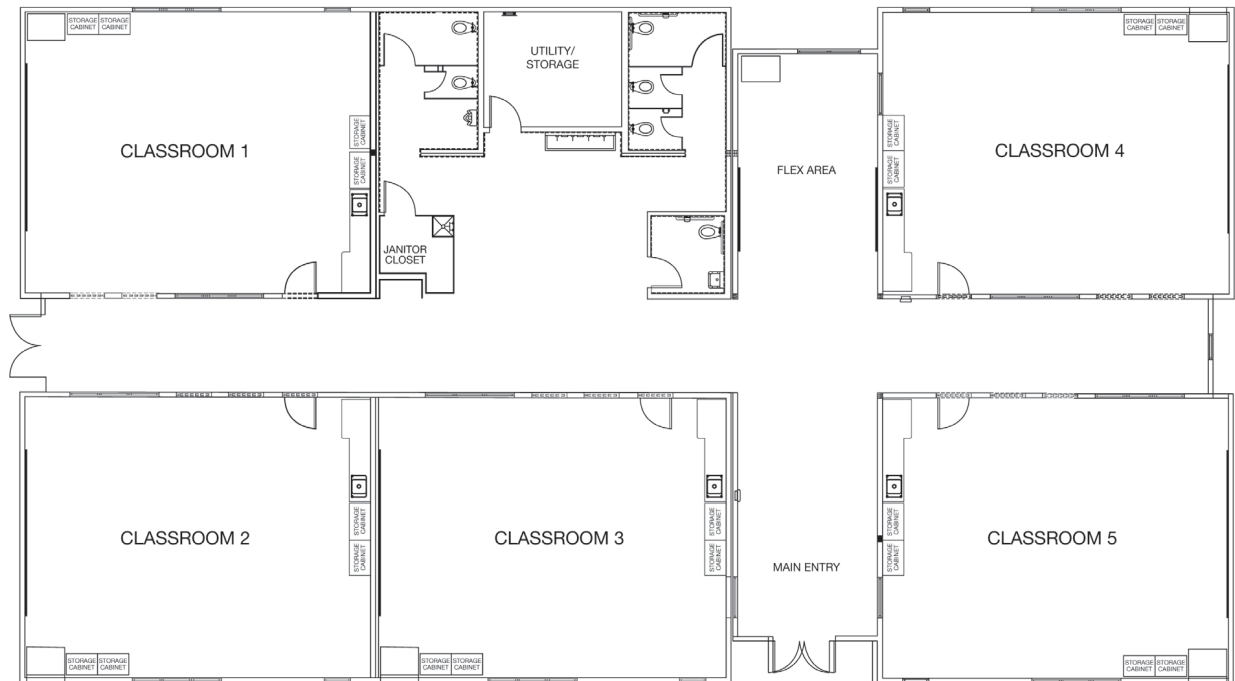


CENTRAL KITSAP SCHOOL DISTRICT: SILVERDALE ELEMENTARY



We've been watching this come together – to finally step foot inside was just fantastic. We immediately see the bright new walls and it felt so light and airy. The students are so excited and you could see...their eyes lighting up...taking it all in.

- Mary Tanner, Silverdale Elementary Teacher



> Watch the video case study here: offers.pacificmobile.com/sage