

Berkeley Homeless Navigation Center

5,776-square-foot, seven-building complex

Located in Berkeley, CA



Time to Complete: 60-days of issued city permits

Project Overview:

With the City of Berkeley's homeless population quickly growing, the City needed temporary shelter space that would promptly connect the homeless to transitional housing opportunities and provide immediate access to social services. The solution: a seven-building, 5,776 sq. ft. complex that could serve immediate occupancy needs, and can be repurposed and relocated to serve longer-term needs in the future.

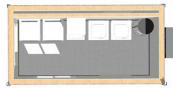
The Navigation Center offers 24/7 access and assistance, providing homeless individuals a place to do their laundry, shower, sleep, eat, garden and gather. There are two dormitories, an office building for administration and checkin, a dining facility to prep and prepare meals and a ground-level security checkpoint building. The new navigation center will feature low-barrier, onsite services offering individuals easy access to mental health counselors, job counselors, housing counselors, family reunification experts, drug and alcohol counselors, and much more. The new navigation center fulfills the City's goal of providing a safe space for those living on the streets while providing access to social services, ultimately transitioning the City's homeless into permanent housing. Relocatable space offered the City flexible expansion, fast delivery, ease of relocation, and lowcost reconfiguration.

Highlights:

- Staff offices with a separate restroom
- Gathering area with casework and sinks for prepared meals
- Restroom, shower and laundry facilities
- Foundation and bracing engineered to meet high seismic zone requirements



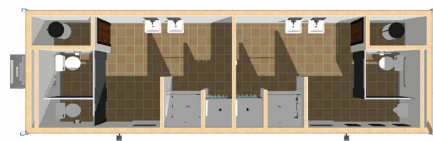
Berkeley Homeless Navigation Center



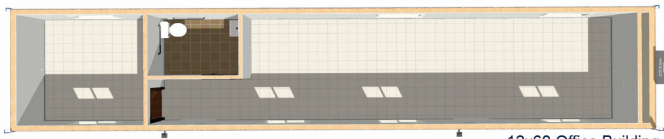
8x16 Laundry Building



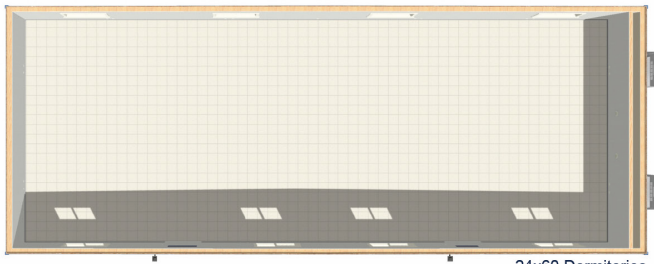
8x16 Security Building



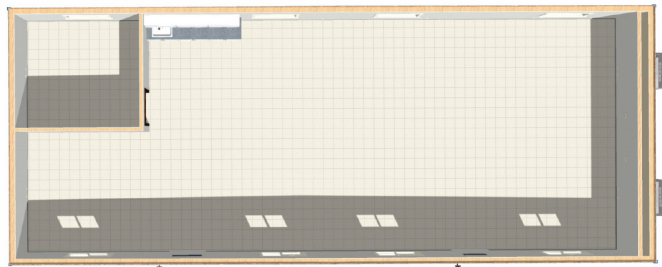
12x40 Restroom with Showers



12x60 Office Building



24x60 Dormitories



24x60 Dining Facility