

City of Fremont Navigation Center

5,644-square-foot Homeless
Shelter

Located in Fremont, CA



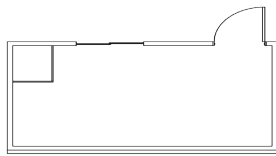
Time to Complete: 9 Floors, 96 days from delivery to occupancy

Project Overview:

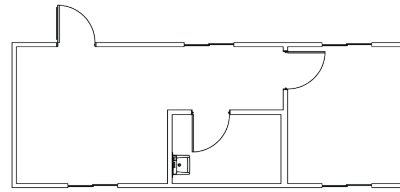
Six mobile and modular buildings outfitted for use as dormitories, an assembly room, manager's office, laundry, restrooms, and showers provided to Bay Area Community Services with the accommodations they needed to provide shelter for high-needs homeless adults for the City of Fremont, CA. The mobile and modular building designs focus on hygiene and safety while providing privacy and security in a supervised environment. Each structure is installed above grade using a temporary pier/pad foundation system and modular ramping. The City of Fremont required a non-permanent solution so they could relocate the center to higher need areas in the future and restore the current site to its original intended use. Relocatable buildings were a cost-effective solution enabling the city to allocate resources and operate a proven program that helps individuals stay out of institutional care and stay connected with their communities. Relocatable, modular and mobile buildings offered a new and innovative solution for the city.



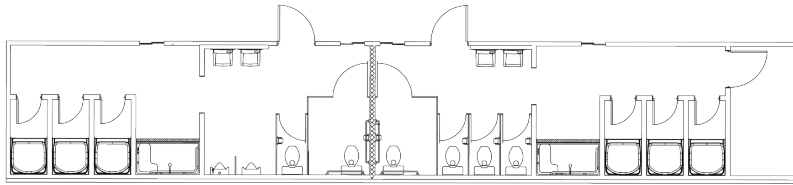
City of Fremont Navigation Center



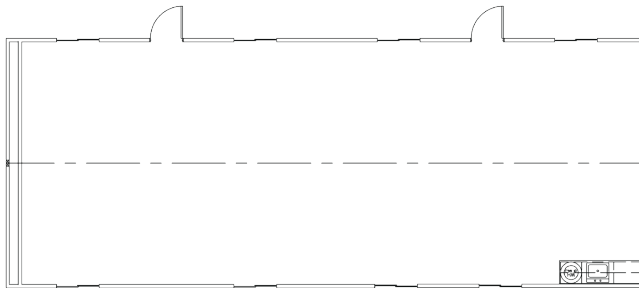
10x16 Laundry Building



12x32 Office Building



12x65 Men's and Women's Restrooms and Showers Building



24x60 Assembly Building



24x60 Dormitories