

## Genentech – OES DPR

7,680-Square-Foot of Office Space

Located in Oceanside, CA



Time to Complete: 11 Floors – 30 Days from delivery to occupancy

### Project Overview:

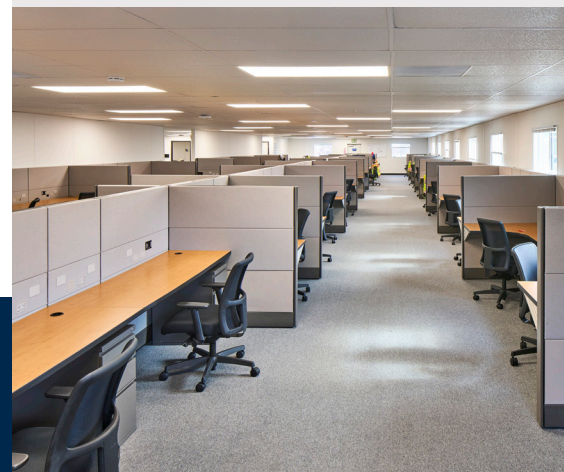
Genentech began a \$450 million expansion of its biotech campus in Oceanside, California with a new facility set to produce complex drugs for rare diseases and personalized medicine. DPR Construction was hired as the contractor on the project. They needed temporary onsite office space for their personnel to work in throughout the duration of the project. To secure the space they needed, they turned to their equipment provider, OES. To fill DPR Construction's need, OES turned to their trusted partner for all mobile and modular needs, Pacific Mobile Structures.

Pacific Mobile Structures provided a 120X60 office building complete with a deck and a 12X40 restroom trailer, both of which they already had on hand. With a quick renovation, the buildings were outfitted and ready to be used by DPR Construction as onsite office space for their team. The buildings were placed right next to the jobsite on a 12-month lease.

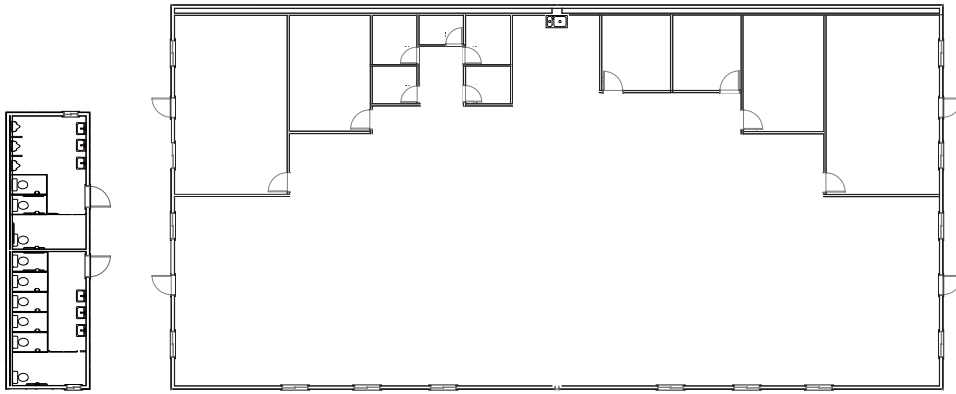
What makes this project unique is the size of the provided building and 30-day turnaround time to get the buildings ready for occupancy. OES has a longstanding relationship with Pacific Mobile Structures that is built on a foundation of reliability and trust that they will get what they need, when they need it, and how they want it – every single time.

### Highlights:

- 120X60 Office Building
- 12X40 Restroom Trailer
- Deck System



# Genentech – OES DPR



12'x40' Restroom Building

120'x60' Office Building

