

# 11 Mile Solar – Blattner Energy

Six Buildings – 8,256-Square-  
Feet of Jobsite Office Space

Located in Casa Grande, AZ



Time to Complete: 11 Floors – 21 From delivery to occupancy

## Project Overview:

Blattner Energy was building a solar plant in a remote area, and they needed a job site office space for the construction crew to work out of for the duration of the project. They turned to Pacific Mobile Structures to provide them with the temporary space they needed. Pacific Mobile Structures provided six brand new buildings and configured them in a U-shape that flows into the parking lot, allowing for different teams working on the project to collaborate effectively and efficiently and have proper oversight of the property.

A 24x60 building features a classroom environment for training and badging, a 12x44 building features a nursing station for safety and first aid, and a 48x60 building features a large open floor plan for co-collaboration space in addition to the other buildings. The exterior of the buildings features steps, skirting, stock colors, and an above-grade set. All buildings are outfitted with air conditioning to maintain a comfortable work environment amidst the harsh conditions of the desert.

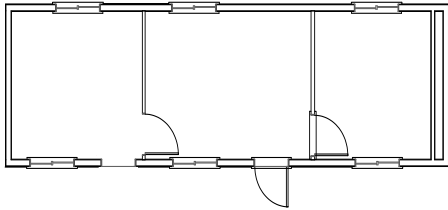
This is one of Pacific Mobile Structures' first notably sized projects in Arizona that supports Arizona's growth and expansion of its resources, such as power and water, for its growing population.

## Highlights:

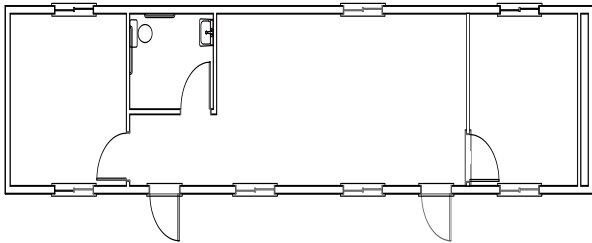
- Classroom environment for training and badging
- Nursing station
- Co-Collaboration space
- Steps
- Skirting
- Stock colors
- Above grade set



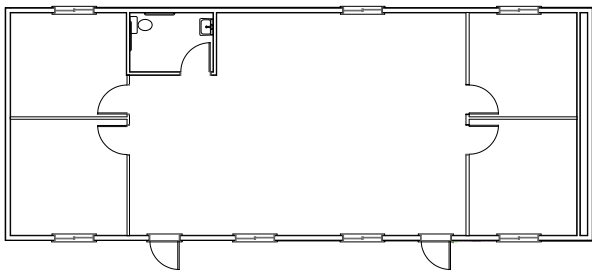
# 11 Mile Solar – Blattner Energy



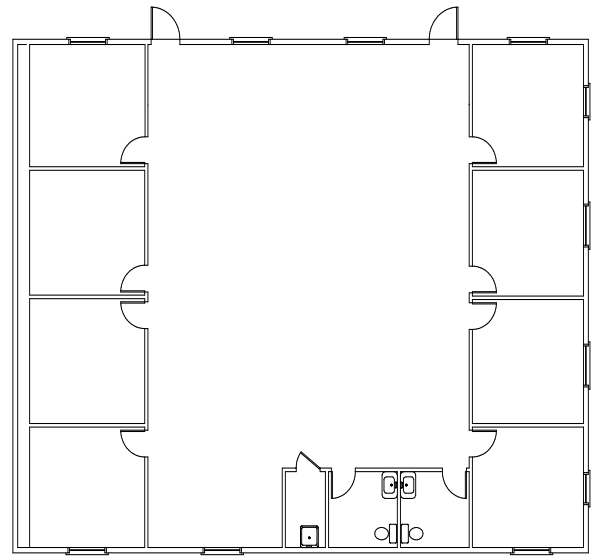
12'x40' Office Building



2 12'x60' Office Buildings



2 24'x60' Office Buildings



48'x60' Office Building

