

# FLOOR PLAN

1/4" = 1'-0"

	QTY.	SIZE	DESCRIPTION	LOCK	REMARKS
DOORS	①	2	3'0" x 6'8"	INSULATED GALV. STEEL WITH STEEL JAMB AND WEATHERSTRIPPING DEFAULT .60 U-FACTOR	D70L SS BBH/NRP HINGES PAINT FINISH LCN 1461 CLOSER
WINDOWS	①	2	72 x 48	HORIZ. SLIDER-DUAL GLAZE-LOW 'E' VINYL FINISH-SOLAR BRONZE TINT NFRC .37 U-FACTOR - SHADING COEFFICIENT .54	
	②	6	46 x 39	FRAMED OPENING	



### FILE COPY

APPROVED  
 APPROVED EXCEPT AS NOTED  
 REVISE AS NOTED AND RESUBMIT  
 APPROVED BY SP DATE 8-6-04

7-30-04	PRELIM REVIEW - SP	LDG	
DATE	REVISION	BY	

COPYRIGHT 2004, BLAZER INDUSTRIES, INC.  
 THIS MATERIAL IS THE EXCLUSIVE PROPERTY  
 OF BLAZER INDUSTRIES, INC. AND SHALL  
 NOT BE REPRODUCED, USED, OR DISCLOSED  
 TO OTHERS EXCEPT AS AUTHORIZED BY THE  
 WRITTEN PERMISSION OF BLAZER INDUSTRIES.



MOBILE  
 28 x 64  
 OR, WA, ID

Classroom for:  
**Lease Unit**

Pacific Mobile 04 BLMP-07, A1

TITLE:	FLOOR PLAN
Issue Date:	7-30-04
DRAWN BY:	KwA
DATE:	7-20-04
JOB NO.:	12664-65

# A-1

# FASTENING SCHEDULE

## WALLS:

PLATE-TO-STUD	MIN. OF 2- 10d x 3" BOX NAILS (SENCO KC27 OR EQUAL)
VW SHEETROCK-TO-STUD AT INTERIOR	SENCO P15 STAPLES & GLUE
BOTTOM PLATE-TO-FLOOR	10d x 3" BOX NAILS AT 8"oc (SENCO KC27 OR EQUAL)
DURATEMP SIDING-TO-STUD AT SIDEWALL	0.092" x 1 3/4" LONG GALV BOX NAILS AT 6" EDGE, 12" IN FIELD. (AND AT 4"oc TO TOP AND BOTTOM) ALL EDGES SUPPORTED BY FRAMING OR BLOCKING.
DURATEMP SIDING-TO-STUD AT ENDWALL	SEE ENDWALL FASTENING NOTES ON ELEVATIONS
THREE STUD CORNER CONNECTION	10d x 3" BOX NAILS AT 12" (SENCO KC27 OR EQUAL)

## FLOOR:

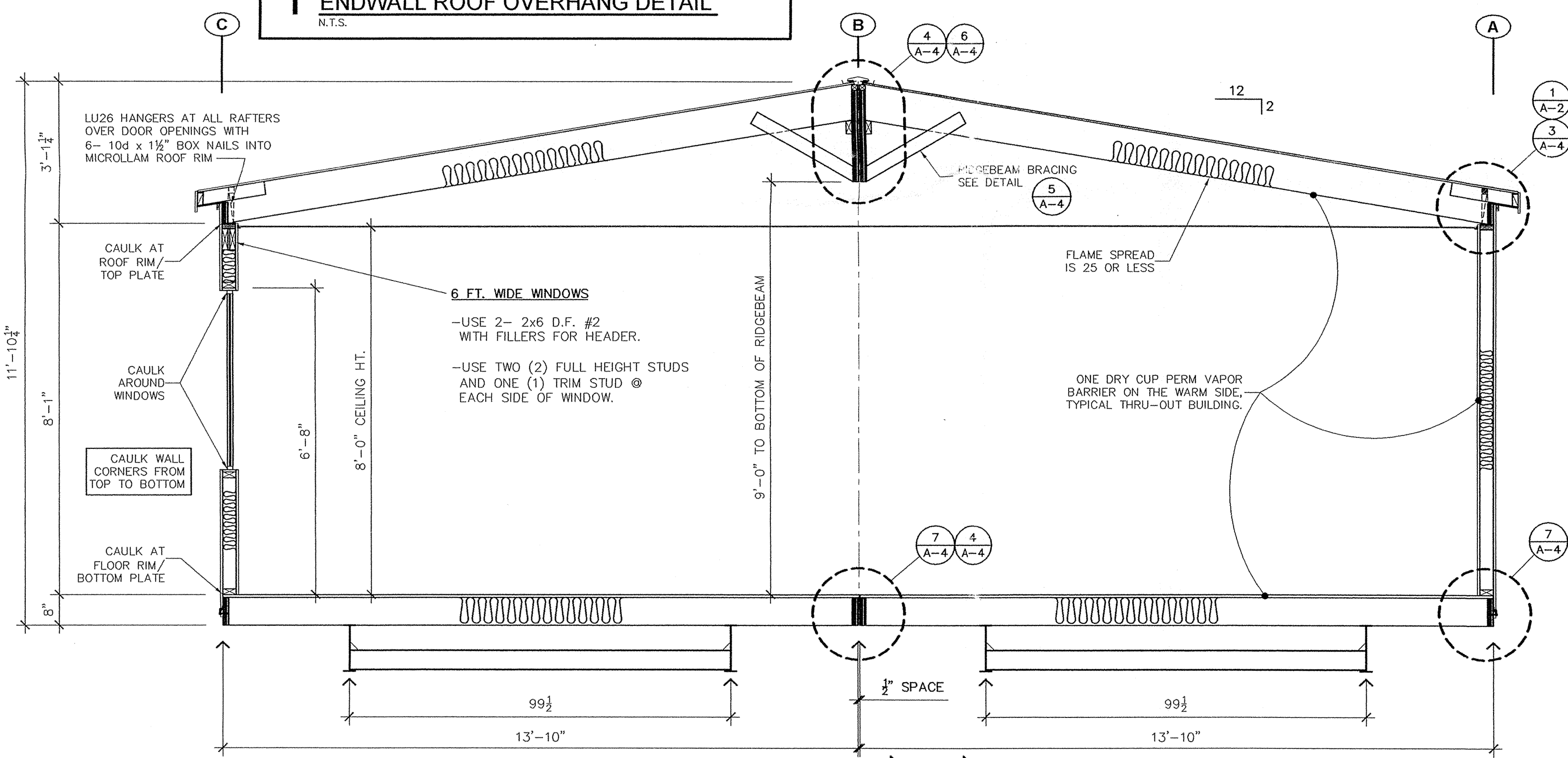
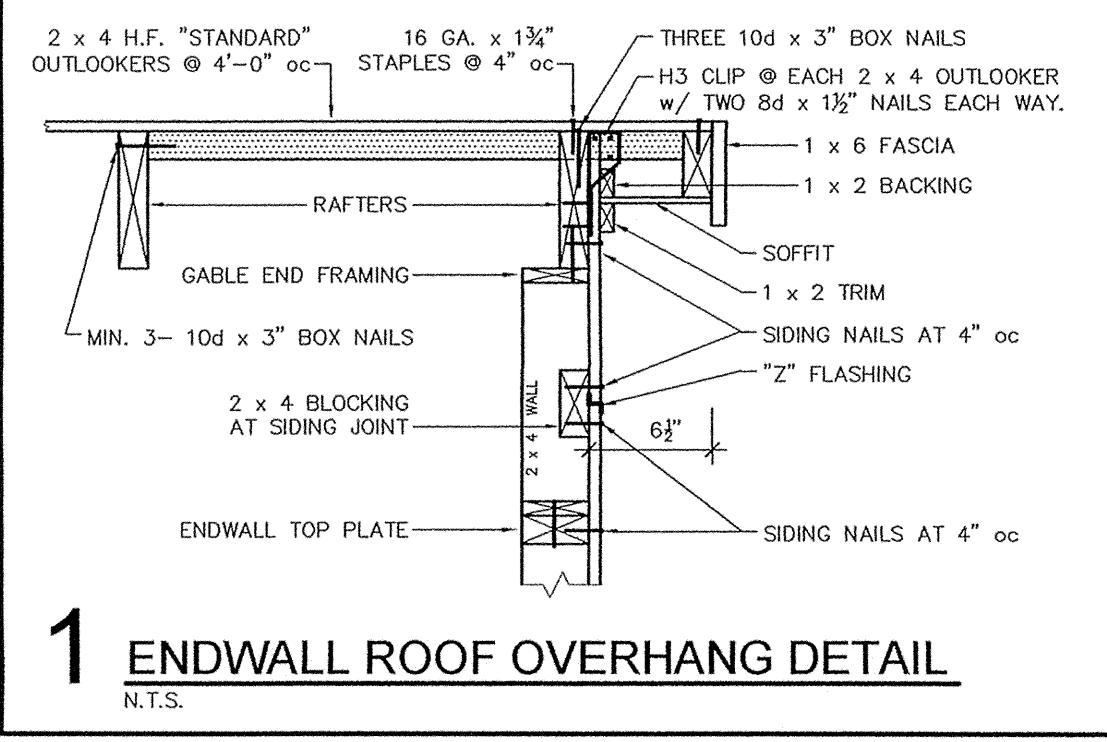
2 x 8 FLOOR JOIST-TO-RIM	MIN. OF 4- 10d x 3" BOX NAILS (SENCO KC27 OR EQUAL)
CLASS "A" BOTTOM COVER-TO-JOIST	16 GA. x 3/8" WIDE CROWN AT 12" MAX. EDGES ONLY
FLOOR DECKING-TO-2x JOIST	0.113" x 2 3/8" RING SHANK AT 6" EDGE, 12" FIELD. (SENCO GE-24). USE CONSTRUCTION ADHESIVE (AFG01) ON JOISTS

## ROOF:

RIM-TO-RAFTERS	3- 10d x 3" BOX NAILS (SENCO KC27 OR EQUAL)
ROOF RIM-TO-TOP PLATE	10d x 3" BOX NAILS AT 8" oc (SENCO KC27 OR EQUAL)
LEDGER-TO-RIDGEBEAM	10d x 3" BOX NAILS AT 3" oc & 3 AT BUTT JOINTS (SENCO KC27 OR EQUAL)
RAFTER-TO-RIDGEBEAM	5- 10d x 3" BOX NAILS (SENCO KC27 OR EQUAL) TOENAILED
SHEATHING-TO-ROOF MEMBERS	16 GA. x 1 3/4" STAPLES AT 6" EDGE, 12" IN FIELD (SENCO N19) NOTE: SHEATHING TO BE INSTALLED PERPENDICULAR TO THE RAFTERS. OFFSET SHEATHING 4 FT. BLOCK EDGES OF ANY PIECES LESS THAN 24"

## MARRIAGE LINE CONNECTION:

RIDGEBEAMS	NOTE: ALL MARRIAGE LINES (DEFINED AS THE SPACE BETWEEN ADJOINING MODULES) MUST BE INSULATED AT THE ROOF, FLOOR AND WALLS ON SITE. 1/2" BOLTS WITH 1 1/2" DIA. WASHERS AT 6'- 0"oc AND 8" FROM EACH END (MINIMUM 2" EDGE DISTANCE)
RIM JOISTS	1/2" BOLTS WITH 1 1/2" DIA. WASHERS AT 4'- 0"oc AND 8" FROM EACH END (MINIMUM 2" EDGE DISTANCE)



# SECTION - A-A

1/2" = 1'-0"

# MATERIAL LIST

## ROOF:

ROOFING	.PABCO "PREMIER" 30-YEAR ARCH. SHINGLE OVER TWO LAYERS NON-PERF. 15# FELT APPLIED SHINGLE FASHION -HIGH WIND APPLICATION-
SHEATHING	.7/16" APA RATED (24/16)
FRAMING	.2 x 10 DF #2 RAFTERS AT 24" oc
RIDGEBEAM	.1 1/2 x 24 MICROLAM LVL 2.0E (CONTINUOUS)
LEDGERS	.2 x 4 TAPER CUT
RIMS	.2 x 6 MICROLAM w/ 2 x 10 VENT BLOCKS
INSULATION	.R-21 CELLULOSE BLOW-IN
CEILING	.SUSPENDED T-BAR (PER UBC STD. 25-2)
ARCHITECTURAL	.6" OVERHANG
SOFFIT	.5/16" PERFORATED HARDIPANEL
VENTING	.CONTINUOUS SOFFIT AND RIDGE

## WALLS:

SIDING	.5/8" DURATEMP T1-11 w/ GROOVES AT 8" oc
FASCIA	.1 x 6 PRIME TRIM
TRIM	.1 x 4 PRIME TRIM AT CORNERS, WINDOWS AND MODLINE
FRAMING	.EXT: 2 x 4 D.F. "STANDARD" or "STUD" OR BETTER STUDS AT 16" oc EXCEPT 2 x 6 STUDS @ POWER PANEL .INT: 2 x 4 D.F. STUDS AT 16" or 24" oc CROSSWALL FRAMED TO BOTTOM OF CEILING
TOP PLATE	.2 x 4 CONTINUOUS MICROLAM
BOTTOM PLATE	.2 x 4 D.F.
INSULATION	.EXT: R-13 FIBERGLASS BATT .INT: R-11 FIBERGLASS "SOUND" INSULATION TO CEILING HEIGHT.
INTERIOR FINISH	.5/8" VINYLWRAP SHEETROCK
SKIRTING	.PREP ONLY

## FLOOR:

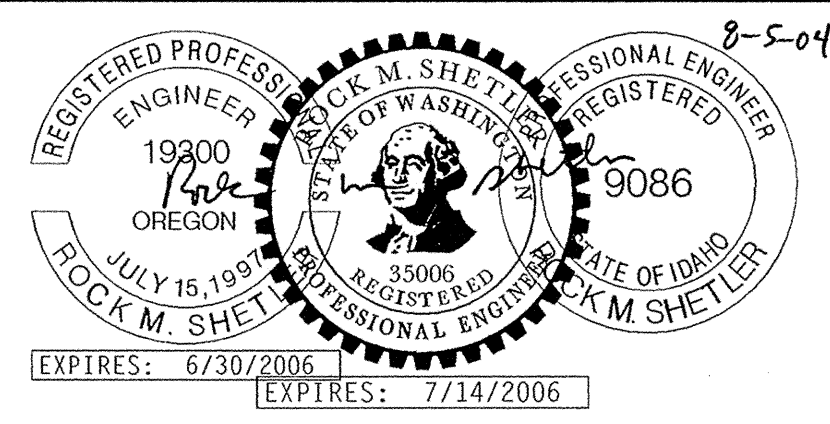
COVERING	.26 oz OLEFIN CARPET WITH T-MOLD AT MOD. LINE
DECKING	.1st: 23/32" A.P.A. RATED STURD-I-FLOOR
FRAMING	.2 x 8 DF #2 JOISTS @ 16" oc LIMIT SPLITS TO 7" OVER FRAME RAILS
RIMS	.2 x 8 CONTINUOUS MICROLAM
INSULATION	.R-25 FIBERGLASS BATT
BOTTOM COVER	.CLASS "A"

## FRAME:

TYPE	.14 x 64 TRANSVERSE
MAIN RAIL	.12" JR. I-BEAM USE FULL LENGTH C-CHANNEL ENDMEMBERS
AXLES	.5-BRAKE, NEW 8:00 14.5 14-PLY TIRES DOUBLE I-BEAM AT AXLE LOCATION
HITCH	.DETACHABLE

## FASTENING REQUIREMENTS:

FLOOR JOIST TO I-BEAM	.5/16" x 3" LAGS AT 32"oc (ALTERNATE SIDE TO SIDE OF EACH I-BEAM)
END CROSSMEMBER CONNECTION TO END RIM JOIST	.(4) 5/16" x 3" LAGS PER MODULE



7-30-04	PRELIM REVIE - SP	LDG
DATE	REVISION	BY

COPYRIGHT 2004, BLAZER INDUSTRIES, INC. THIS MATERIAL IS THE EXCLUSIVE PROPERTY OF BLAZER INDUSTRIES, INC. AND SHALL NOT BE REPRODUCED, USED, OR DISCLOSED TO OTHERS EXCEPT AS AUTHORIZED BY THE WRITTEN PERMISSION OF BLAZER INDUSTRIES.

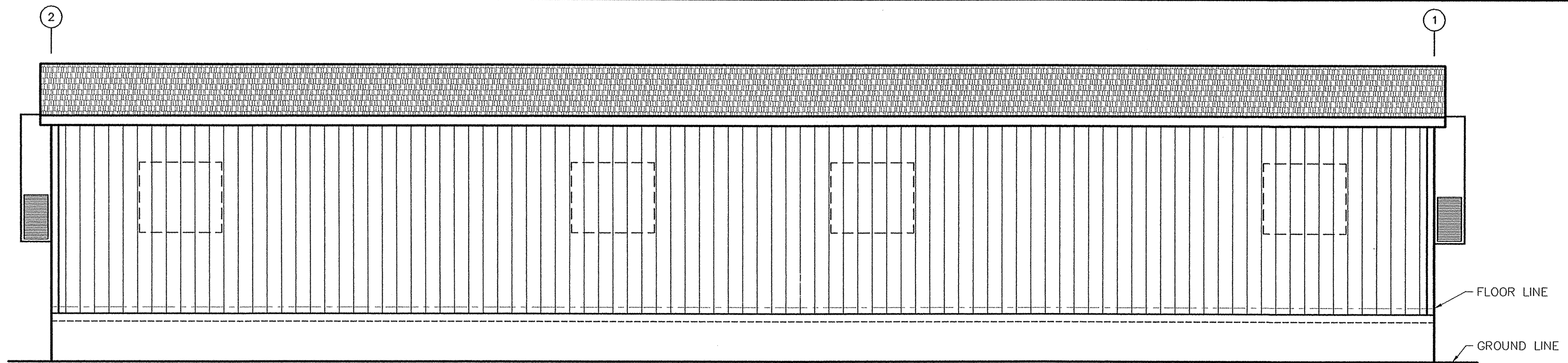


MOBILE  
28 x 64  
OR, WA, ID  
Classroom for:  
**Lease Unit**  
Pacific Mobile  
04 BLMP-07, A1

TITLE:	SECTION
Issue Date:	7-30-04
DRAWN BY:	KwA
DATE:	7-20-04
JOB NO.:	12664-65

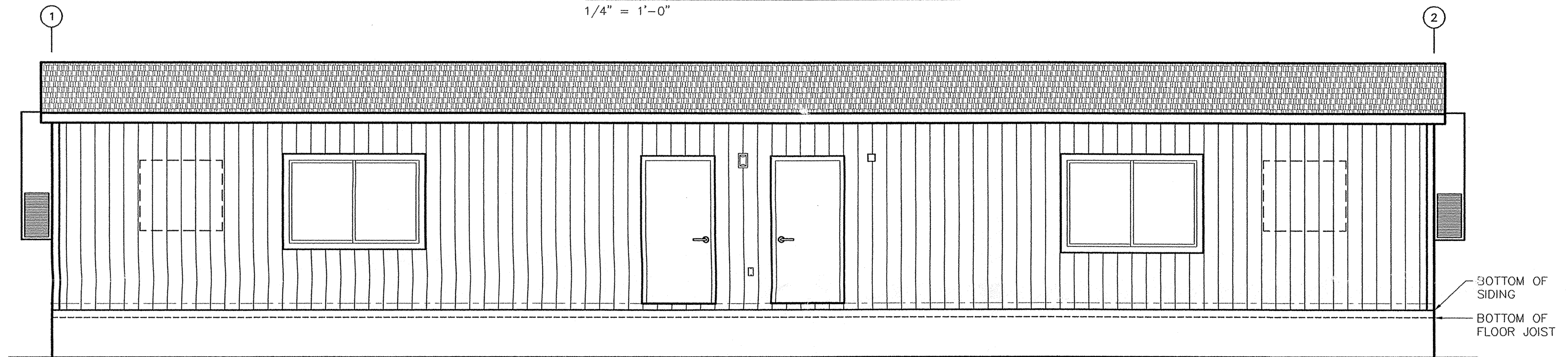
# A-2

R:\ADT3FILE\12664-65.dwg, 08/05/2004 12:11:19 PM



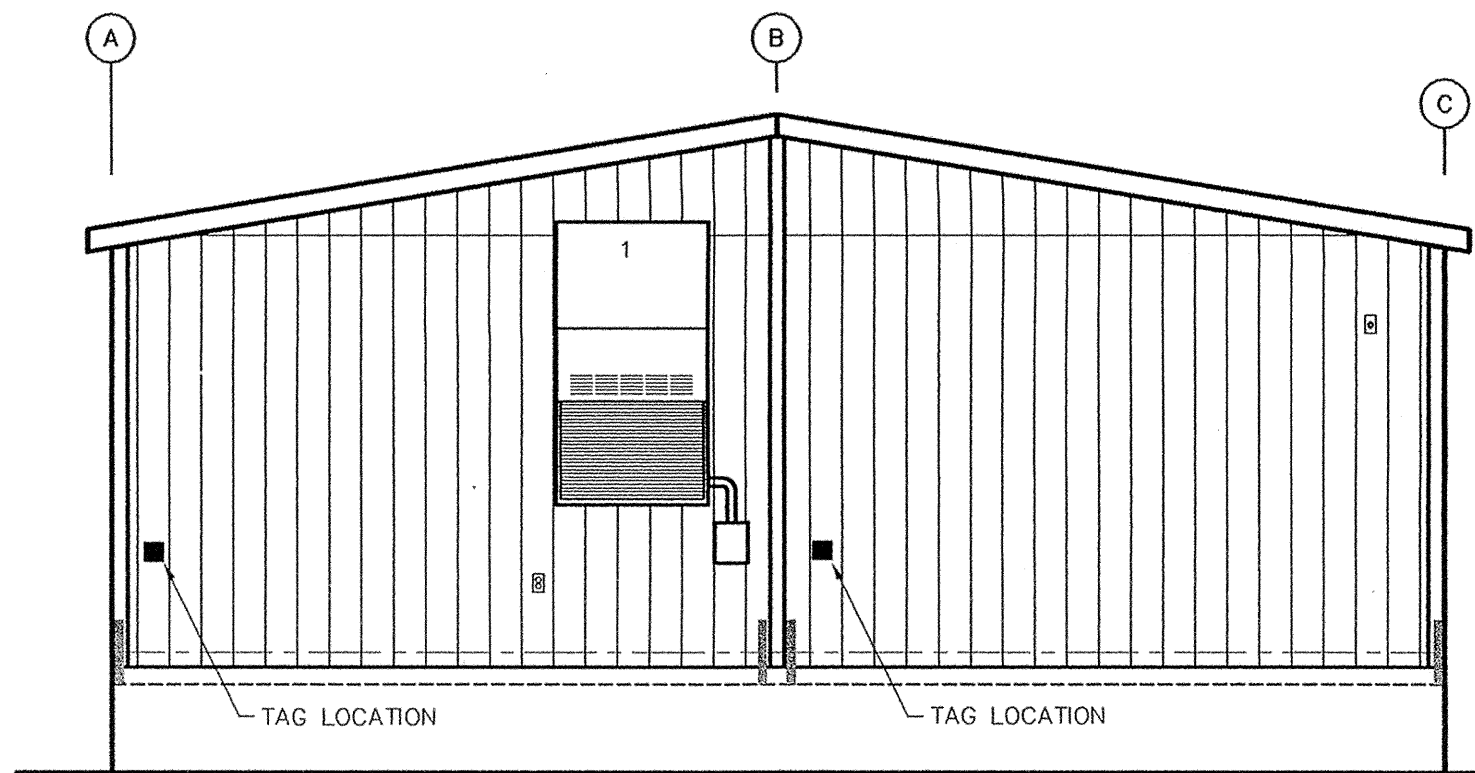
**WALL 'A' ELEVATION**

1/4" = 1'-0"



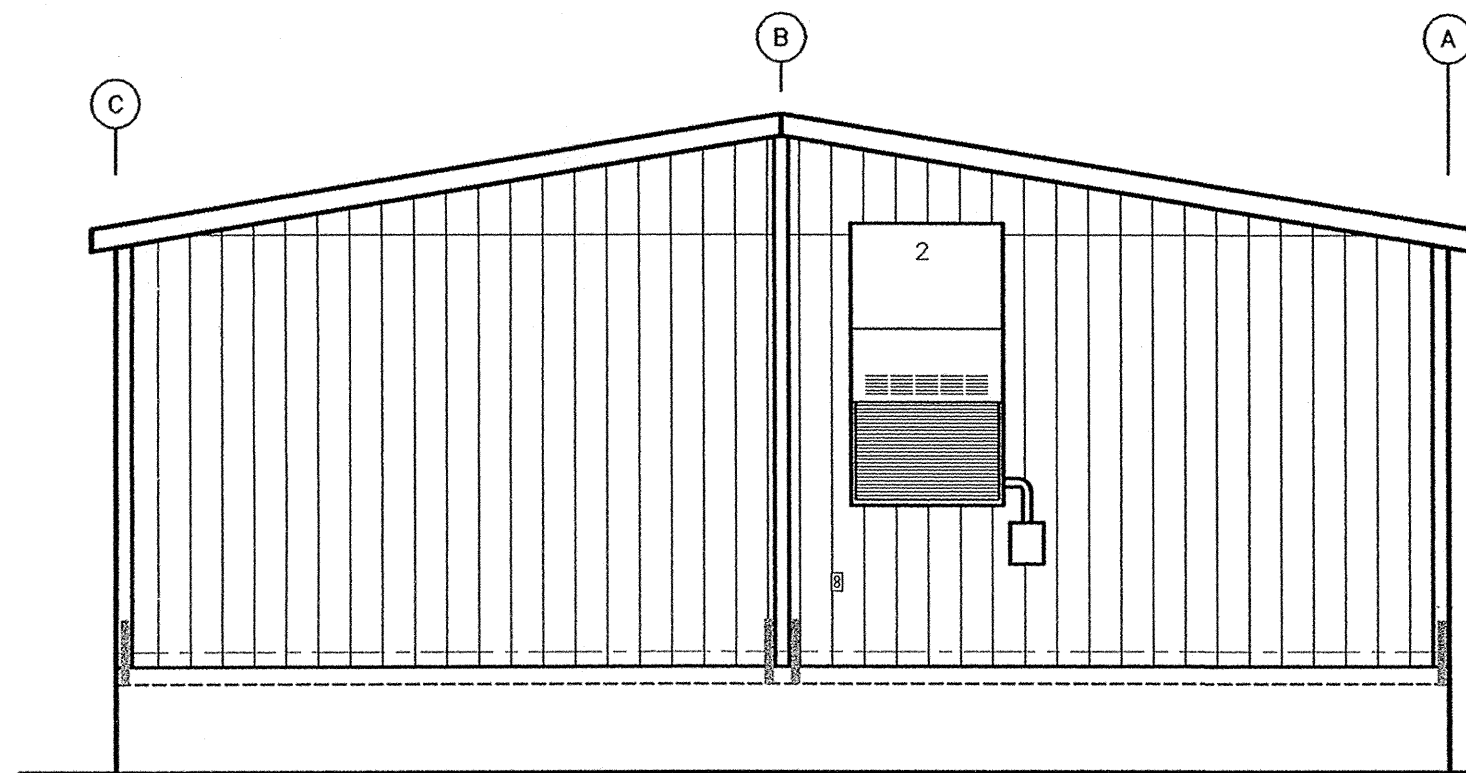
**WALL 'C' ELEVATION**

1/4" = 1'-0"



**WALL '1' ELEVATION**

1/4" = 1'-0"



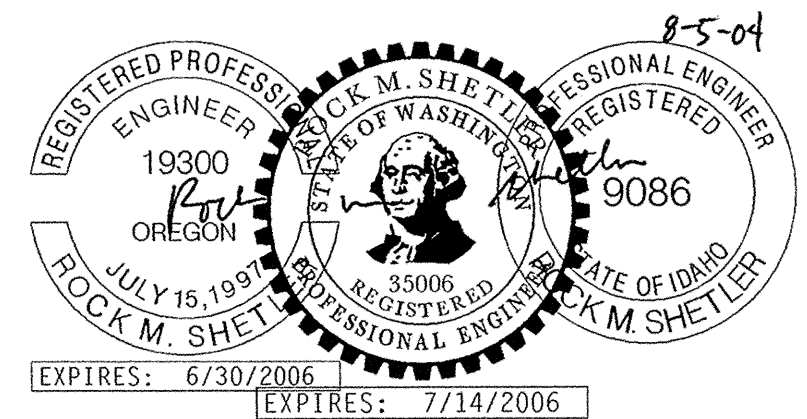
**WALL '2' ELEVATION**

1/4" = 1'-0"

**TYP. ENDWALL FASTENING:**

-INSTALL 5/8" DURATEMP T1-11 SIDING WITH ALL EDGES SUPPORTED AND FASTEN WITH 0.092 x 1 3/4" GALV. NAILS AT 4" oc EDGE, 12" oc FIELD.

-INSTALL ST2215 STRAPS WHERE SHOWN WITH 7- 10d x 1 1/2" NAILS EACH END OF EACH STRAP.



DATE	REVISION	BY

COPYRIGHT 2004, BLAZER INDUSTRIES, INC. THIS MATERIAL IS THE EXCLUSIVE PROPERTY OF BLAZER INDUSTRIES, INC. AND SHALL NOT BE REPRODUCED, USED, OR DISCLOSED TO OTHERS EXCEPT AS AUTHORIZED BY THE WRITTEN PERMISSION OF BLAZER INDUSTRIES.

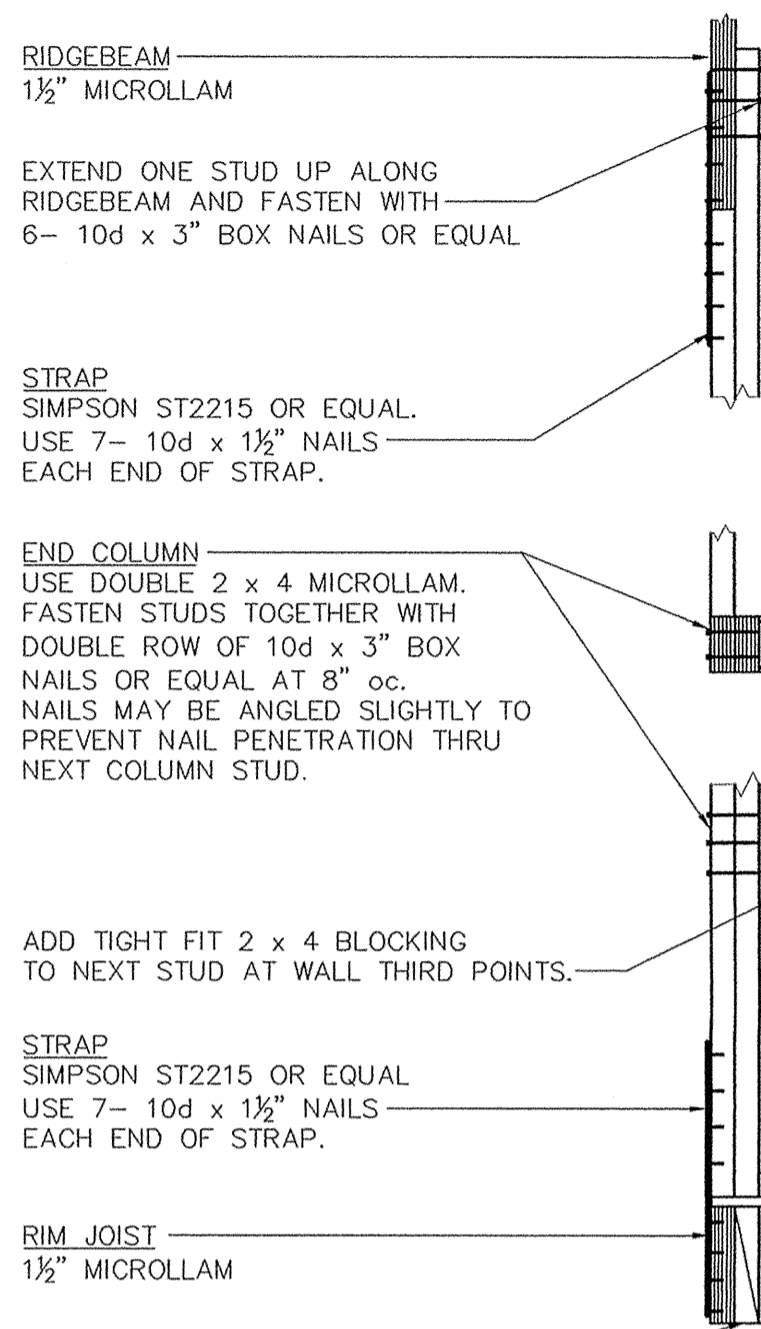


MOBILE  
28 x 64  
OR, WA, ID  
Classroom for:  
**Lease Unit**  
Pacific Mobile  
04 BLMP-07, A1

TITLE:	ELEVATIONS
Issue Date:	7-20-04
DRAWN BY:	KwA
DATE:	7-20-04
JOB NO.:	12664-65

**A-3**

R:\ADT3\FILE\12664-65.dwg, 08/02/2004 12:12:50 PM



**RIDGEBEAM**  
1 1/2" MICROLLAM

EXTEND ONE STUD UP ALONG RIDGEBEAM AND FASTEN WITH 6- 10d x 3" BOX NAILS OR EQUAL

**STRAP**  
SIMPSON ST2215 OR EQUAL.  
USE 7- 10d x 1 1/2" NAILS EACH END OF STRAP.

**END COLUMN**  
USE DOUBLE 2 x 4 MICROLLAM. FASTEN STUDS TOGETHER WITH DOUBLE ROW OF 10d x 3" BOX NAILS OR EQUAL AT 8" oc. NAILS MAY BE ANGLED SLIGHTLY TO PREVENT NAIL PENETRATION THRU NEXT COLUMN STUD.

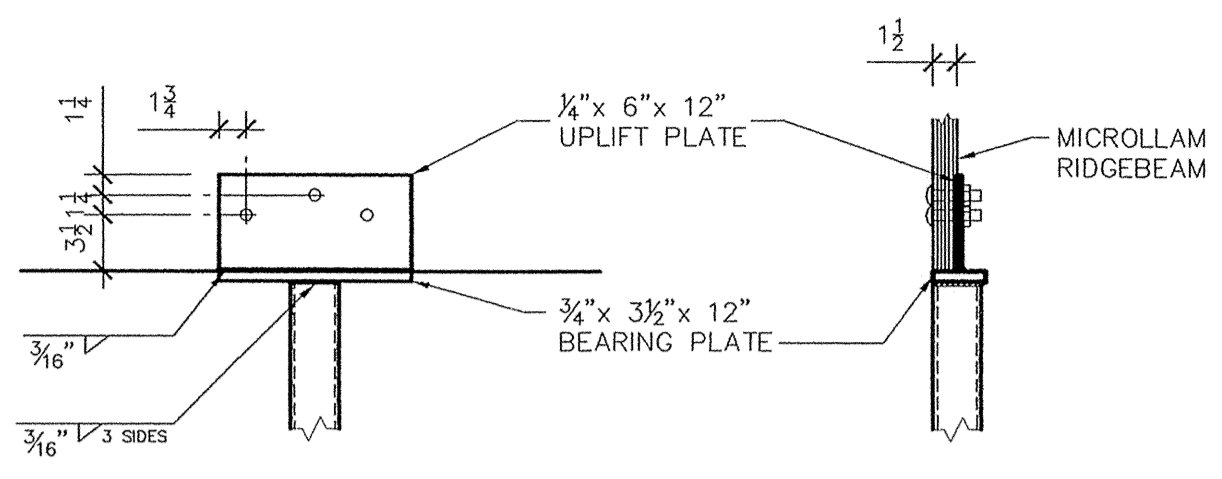
ADD TIGHT FIT 2 x 4 BLOCKING TO NEXT STUD AT WALL THIRD POINTS.

**STRAP**  
SIMPSON ST2215 OR EQUAL  
USE 7- 10d x 1 1/2" NAILS EACH END OF STRAP.

**RIM JOIST**  
1 1/2" MICROLLAM

ADD TIGHT FIT BLOCKING UNDER COLUMN FOR FULL BEARING.

**1 EC224MIC- END COLUMN DETAIL - MICROLLAM**  
1" = 1'-0"



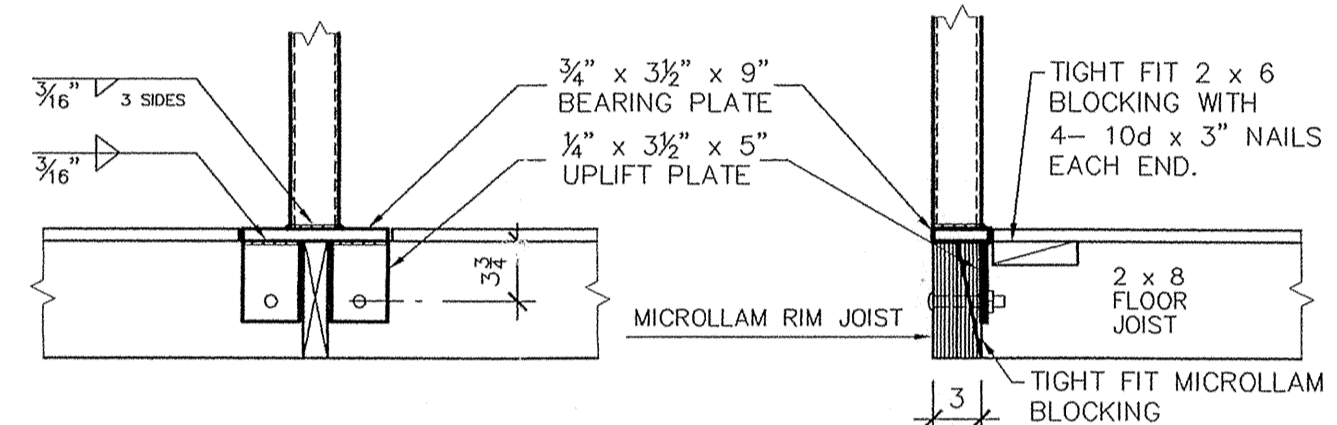
**WELDING:**  
G.M.A.W. - AWS A5.18  
F.C.A.W. - AWS A5.20

ALL WELDS TO BE SINGLE PASS FILLET BY CERTIFIED WELDER TO A.W.S. D1.1 CODE.

A36 STEEL

5/8" A307 CARRIAGE BOLTS (DRILL 1 1/16" HOLES)

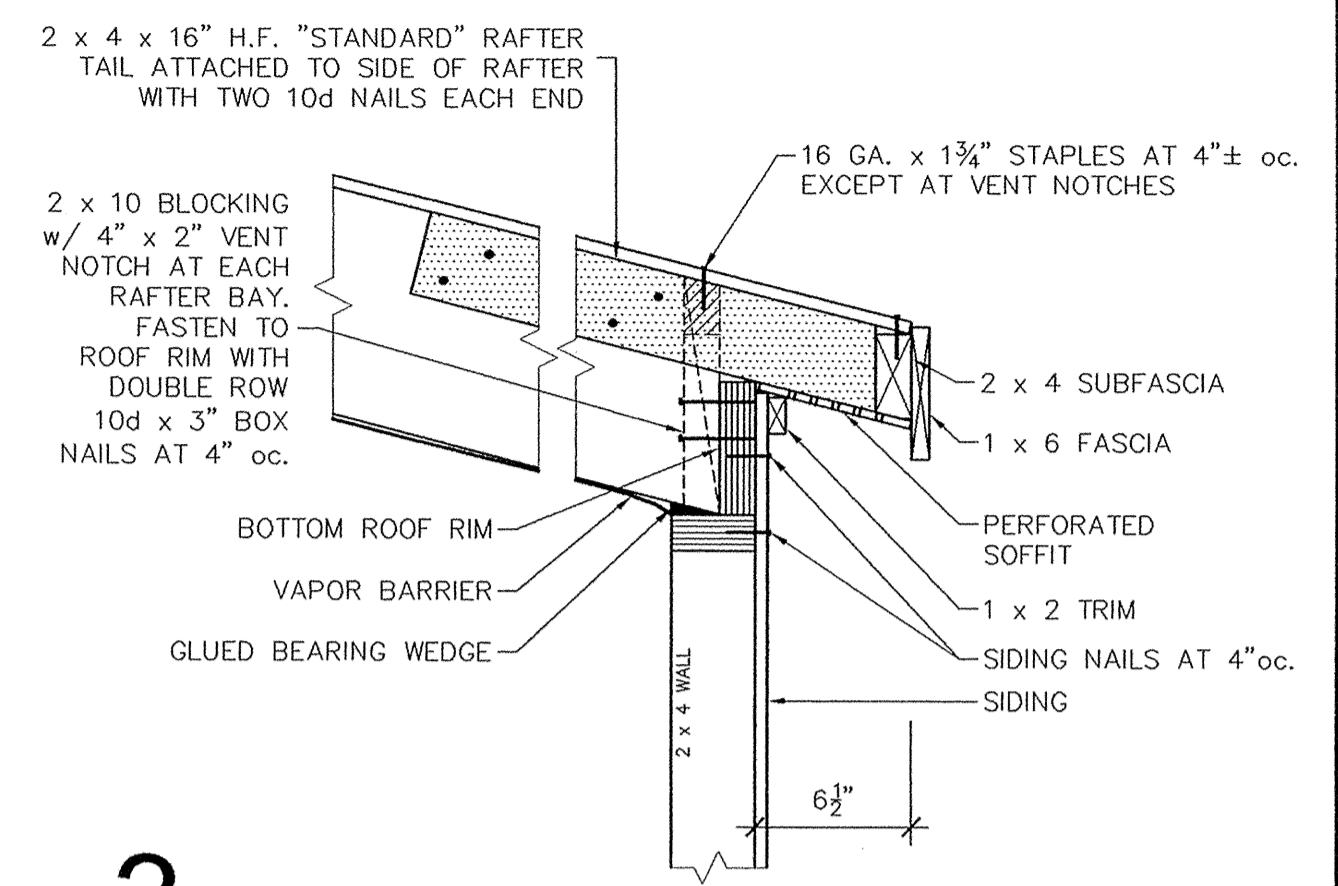
3" x 3" x 3/16" STEEL TUBE COLUMN



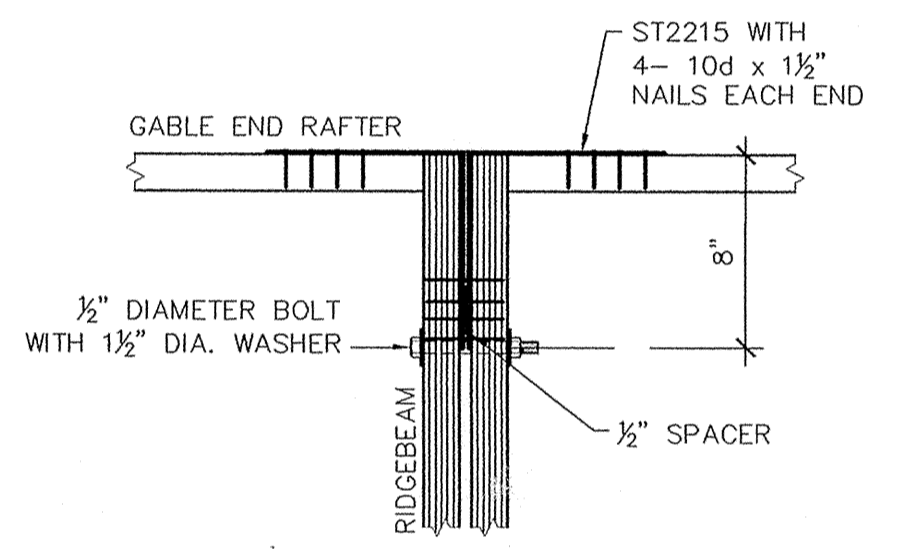
**FASTENER SCHEDULE**

NAIL SIZE	QTY	LOCATION
10d x 3"	5	EACH END
10d x 3"	2 ROWS AT 4" oc.	TO RIM

**2 ICSTL-MKC: INTERIOR COLUMN DETAIL**  
1" = 1'-0"

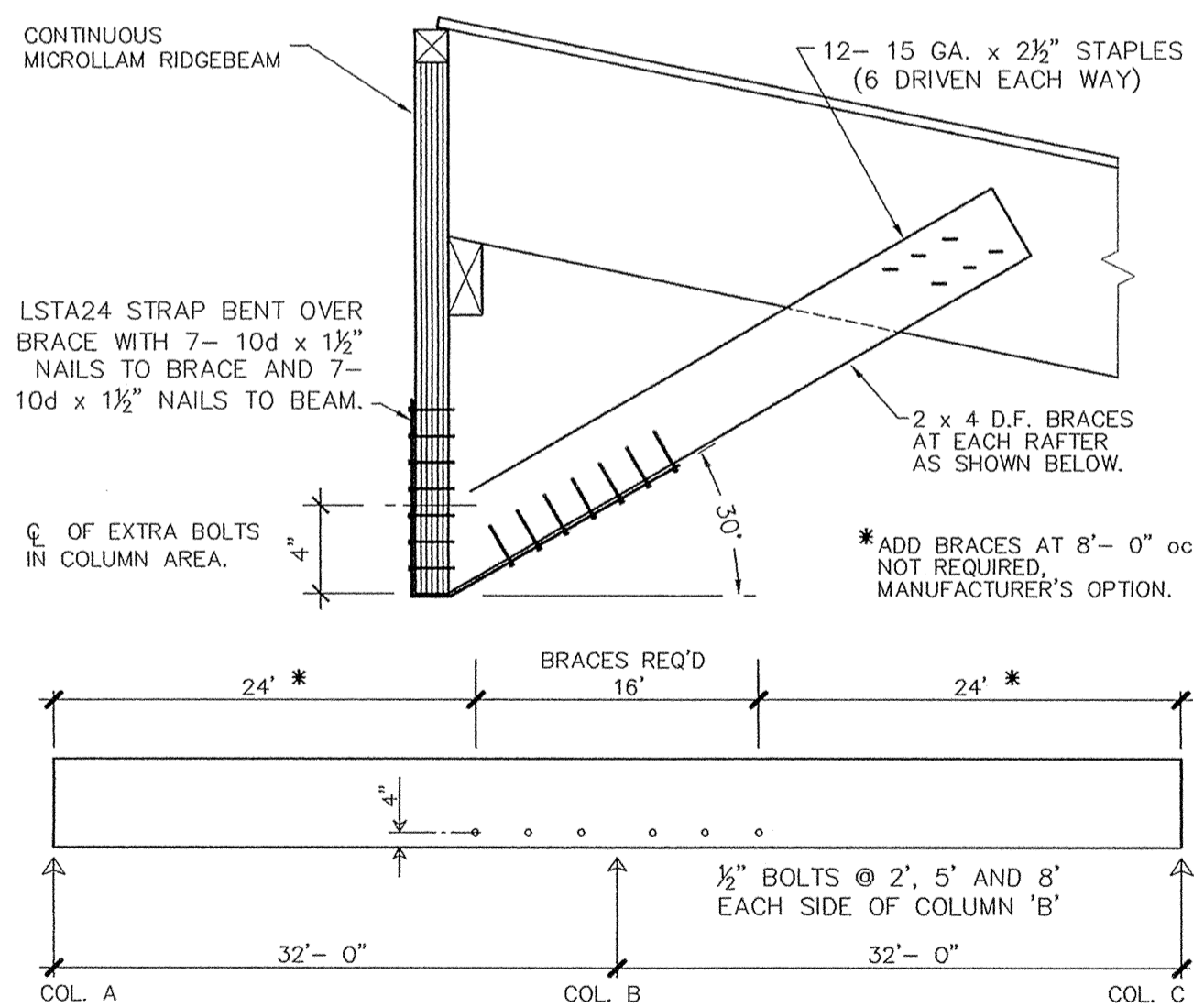


**3 EAVE DETAIL**  
1 1/2" = 1'-0"

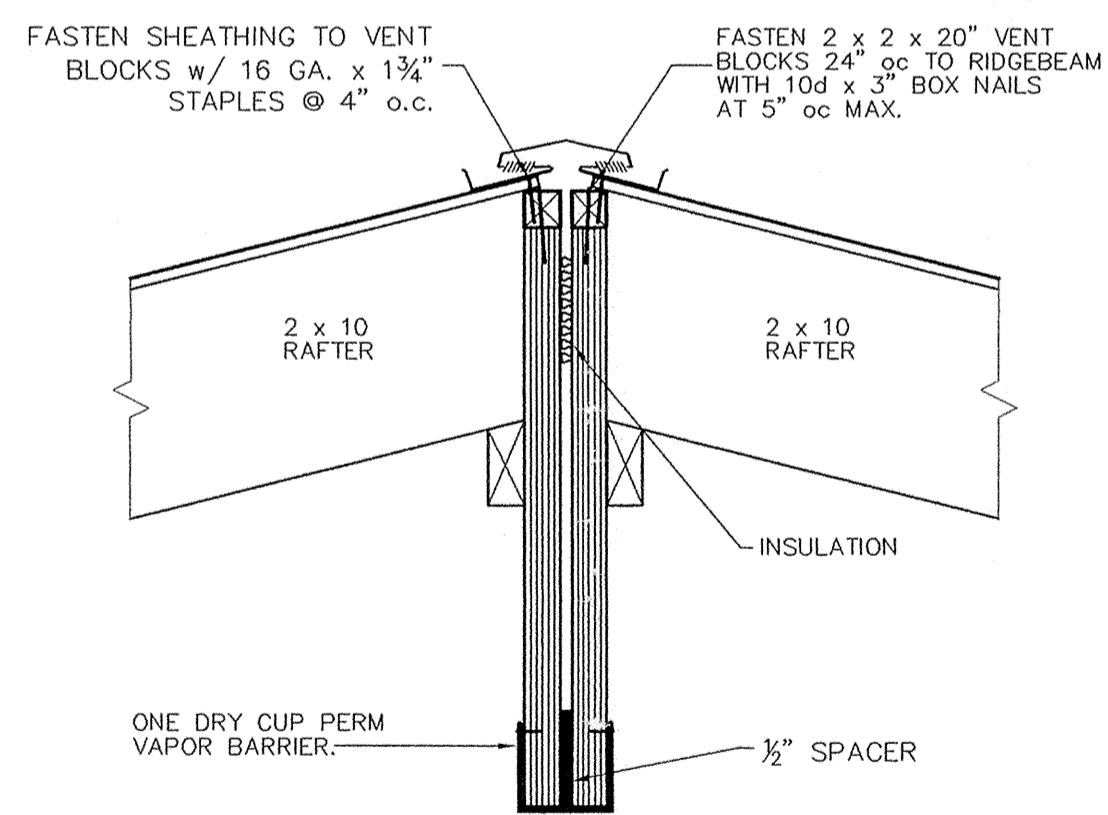


**4 CHORD SPLICE DETAIL**  
1 1/2" = 1'-0"

NOTE: THIS CHORD SPLICE REQUIRED AT FLOOR ALSO. ROOF SHOWN; FLOOR SIMILAR WITH SINGLE RIM.

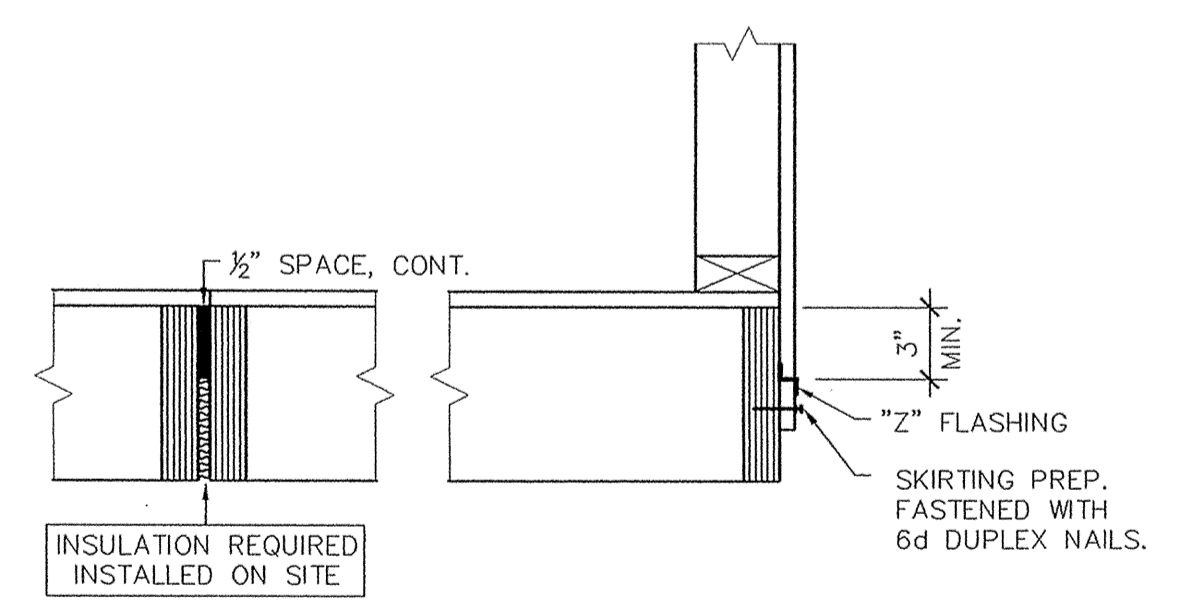


**5 RIDGEBEAM BRACING DETAIL**  
1 1/2" = 1'-0"



- SITE WORK:**
- INSTALL RIDGEVENT WITH 1" GALV. SCREWS @ 12" oc. EACH SIDE
  - INSTALL INSULATION @ MARRIAGE LINE
  - INSTALL VAPOR BARRIER ACROSS MARRIAGE LINE, 2 MIL MIN. (CLOSE-UP PLASTIC SUPPLIED WITH BUILDING MAY BE USED)

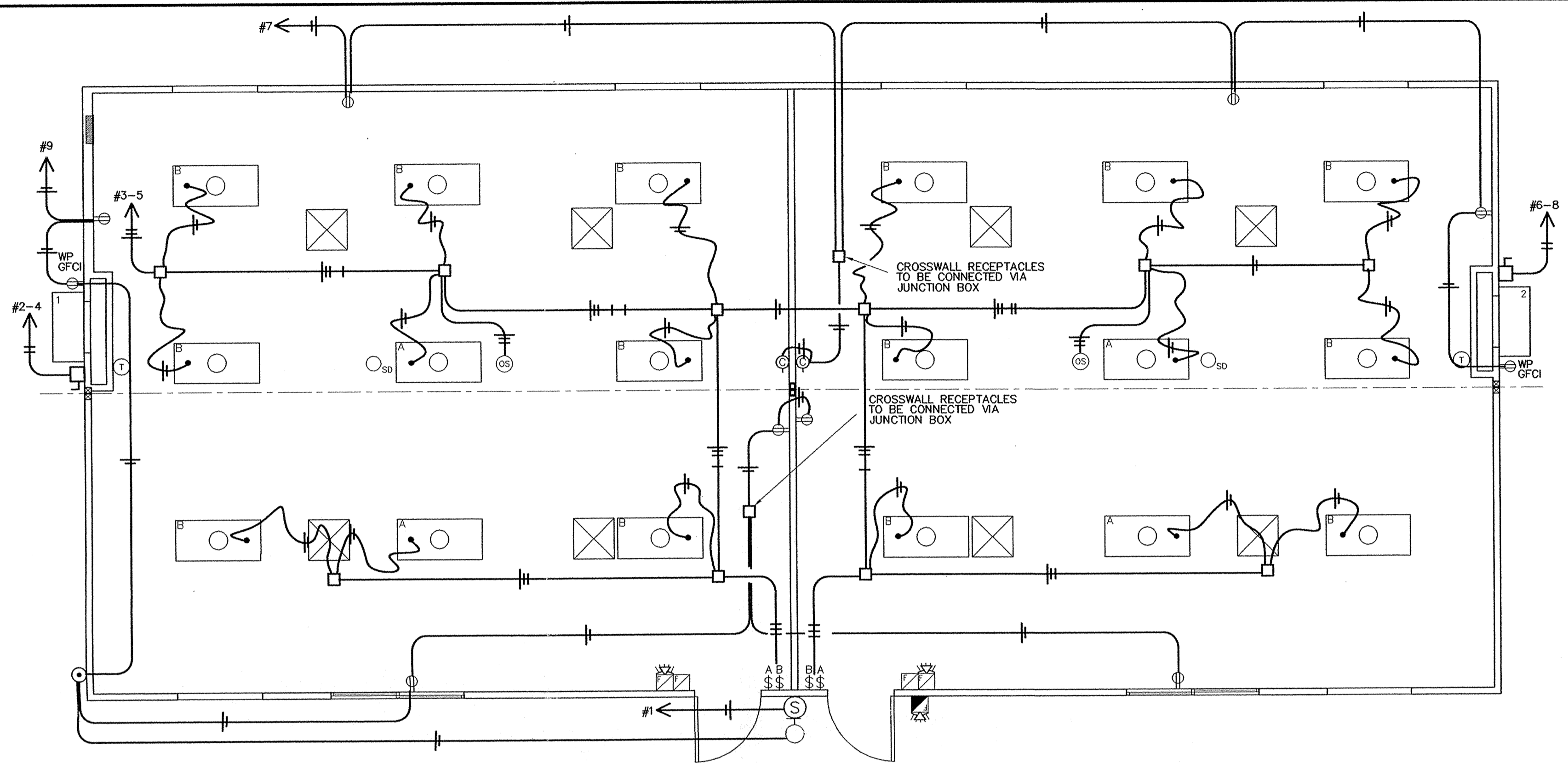
**6 RIDGE DETAIL**  
1 1/2" = 1'-0"



**7 FLOOR DETAIL**  
1 1/2" = 1'-0"

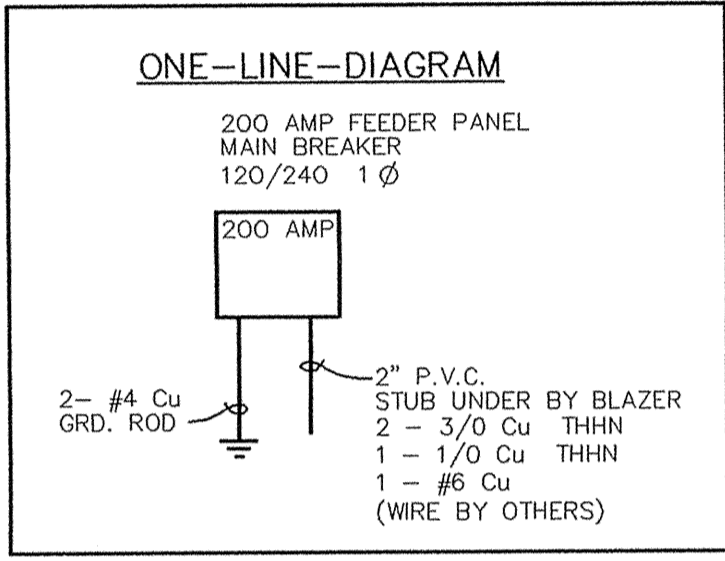


R:\ADT3\FILE\12664-65.dwg, 08/05/2004 12:11:36 PM



# ELECTRICAL PLAN

1/4" = 1'-0" L.L.J.  
THIS PLAN IS NOT AN AS-BUILT



TYPICAL OF TWO

H.V.A.C. (MOTOR, COMPRESSOR, HEATER SIZES)		
OPERATION VOLTAGE	197 MIN.	253 MAX.
COMPRESSOR	12.9 RLA	75 LRA
INDOOR BLOWER FAN	2.2 FLA	1/3 H.P.
OUTDOOR BLOWER FAN	1.5 FLA	1/5 H.P.
HEAT STRIP	10 KVA	
MINIMUM CIRCUIT AMPS	<b>76 AMPS</b>	
MAXIMUM OVERCURRENT PROTECTION	<b>80 AMPS</b>	
OVERCURRENT PROTECTION- DUAL ELEMENT TIME DELAY FUSE OR HACR CIRCUIT BREAKER		

PANEL SCHEDULE											
NOTE: ALL CONDUCTORS COPPER. 200 AMP PANEL SINGLE PHASE											
CKT NO.	DESCRIPTION	TRIP AMPS	WIRE SIZE	VOLT AMPS	A	B	VOLT AMPS	WIRE SIZE	TRIP AMPS	DESCRIPTION	CKT NO.
1	SIGN	20	12	1200			6728	4	80	HEAT PUMP	2
3	LIGHTS	20	12	837			6728	/	/	/	4
5	LIGHTS	20	12	837			6728	4	80	HEAT PUMP	6
7	OUTLETS	20	12	1080			6728	/	/	/	8
9	OUTLETS	20	12	1087							10
11											12
13											14
15											16
17											18
19											20
21											22
23											24

	QTY.	SIZE	DESCRIPTION
ELECTRICAL PANEL	1	200 AMP	SINGLE PHASE SERVICE- STUB UNDER- CONDUIT
LIGHTING	18	2 x 4	TROFFER (3) T-8 TUBES- ELECTRONIC BALLAST
	1	7 WATT	FLUORESCENT PORCH LIGHT LEXAN COVER ON PHOTOCELL
H.V.A.C.	2	2.5 TON	10 kW WALL HUNG HEAT PUMP WITH COMMERCIAL ROOM VENTILATOR
THERMOSTAT	2		White Rodgers #F93-380 w/ MICROPROCESSOR- 7 DAY PROGRAMMABLE AUTOMATIC SETBACK- DEADBAND CONTROL
OUTDOOR THERMOSTAT	2		CMH-14

- NOTES:
- WHEN STRANDED WIRE IS USED, ALL TERMINATIONS ARE MADE BY A PRESSURE TERMINAL, BY TAILING OFF WITH SOLID CONDUCTORS OF OTHER APPROVED MEANS OF TERMINATION.
  - ALL CONDUCTORS ARE COPPER; TYPE THHN.
  - RATING OF STANDARD PANEL IS 22,000 A.I.C.
  - WIRING METHOD IN CONDUIT.
  - LIGHTING CONFORMS TO WASH. STATE ENERGY CODE 51-11, CHAPTER 15.

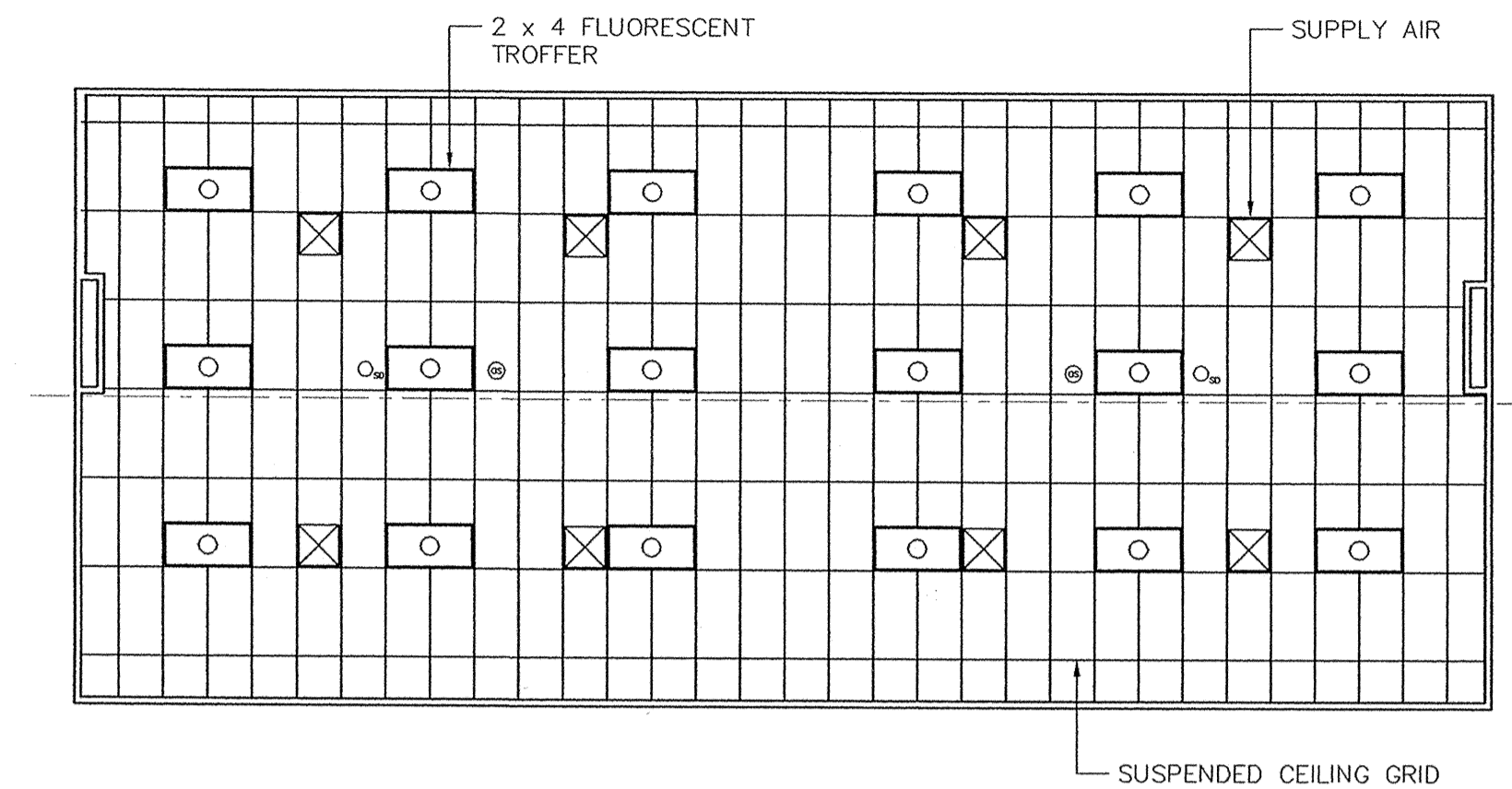
ELECTRICAL SYMBOLS			
SYMBOL	DESCRIPTION	HEIGHT TO TOP	REMARKS
⊖	SINGLE POLE SWITCH	48"	1440 V.A. MAX. LIMIT PER SWITCH
⊖	OCCUPANCY SENSOR	CEILING	1200 V.A. MAX. LIMIT PER SENSOR
⊖	DUPLEX RECEPT.	20"	180 V.A. EACH
⊖	WEATHER PROOF RECEPT.	20"	180 V.A. EACH CLEAR IN-USE COVER
⊖	SIGN CIRCUIT	20"	1200 V.A. EACH
⊖	CLOCK RECEPTACLE	84"	180 V.A. EACH
⊖	PULL STATION	48"	
⊖	FIRE ALARM HORN/STROBE	84"	1/2" RACEWAY ONLY PAINT SUBSTANTIALLY RED
⊖	EXT. FIRE ALARM HORN/STROBE	84"	
⊖	SMOKE DETECTOR	CEILING	ON SITE BY OTHERS
⊖	THERMOSTAT	48"	TO TOP OF J-BOX
⊖	HVAC DISCONNECT		
⊖	PORCH LIGHT	84"	7 V.A. FLUORESCENT
⊖	PHOTOCELL	84"	
⊖	24" x 48" TROFFER	CEILING	3- T-8 TUBE ELECT. BALLAST 93 V.A. EACH FIXTURE
⊖	POWER PANEL	72"	

ELECTRICAL PLAN REVIEW LOAD CALCULATIONS					
VOLTAGE:		120/240	PHASE:		1 Ø
	CONNECTED LOAD		CALC. LOAD		
<b>LIGHTING</b>					
EXTERIOR	7 V.A.	X 125 % =	9 V.A.		
INTERIOR	1674 V.A.	X 125 % =	2093 V.A.		
EXIT	___ V.A.	X 125 % =	___ V.A.		
EMERGENCY	___ V.A.	X 125 % =	___ V.A.		
TIME CLOCK	___ V.A.	X 125 % =	___ V.A.		
EXHAUST FANS	___ V.A.	X 125 % =	___ V.A.		
<b>RECEPTACLES</b>					
THRU 10,000	2160 V.A.	X 100 % =	2160 V.A.		
OVER 10,000	___ V.A.	X 50 % =	___ V.A.		
<b>MOTORS, COMPR.</b>					
TOTAL	1056 V.A.	X 100 % =	1056 V.A.		
LARGEST	(528) V.A.	X 25 % =	132 V.A.		
<b>HEATING</b>	26912 V.A.	X 100 % =	26912 V.A.		
<b>SIGN</b>	1200 V.A.	X 125 % =	1500 V.A.		
	___ V.A.	X 100 % =	___ V.A.		
	___ V.A.	X % =	___ V.A.		
	___ V.A.	X % =	___ V.A.		
	___ V.A.	X % =	___ V.A.		
	___ V.A.	X % =	___ V.A.		
<b>TOTAL CONNECTED LOAD</b>	<b>KVA</b>	33.0	<b>TOTAL CALCULATED LOAD</b>	<b>KVA</b>	33.9
	<b>AMPS</b>	137.5		<b>AMPS</b>	141.1

R:\ADT3\FILE\12664-65.dwg, 08/02/2004 11:25:55 AM

7-30-04	PRELIM REVIEW - SP	LDG	COPYRIGHT 2004, BLAZER INDUSTRIES, INC. THIS MATERIAL IS THE EXCLUSIVE PROPERTY OF BLAZER INDUSTRIES, INC. AND SHALL NOT BE REPRODUCED, USED, OR DISCLOSED TO OTHERS EXCEPT AS AUTHORIZED BY THE WRITTEN PERMISSION OF BLAZER INDUSTRIES.		MOBILE	Classroom for:	TITLE: ELECTRICAL
					28 x 64	Lease Unit	Issue Date: 7-30-04
					OR, WA, ID	Pacific Mobile	DRAWN BY: Larry
							DATE: 7-20-04
							JOB NO: 12664-65

# E-1

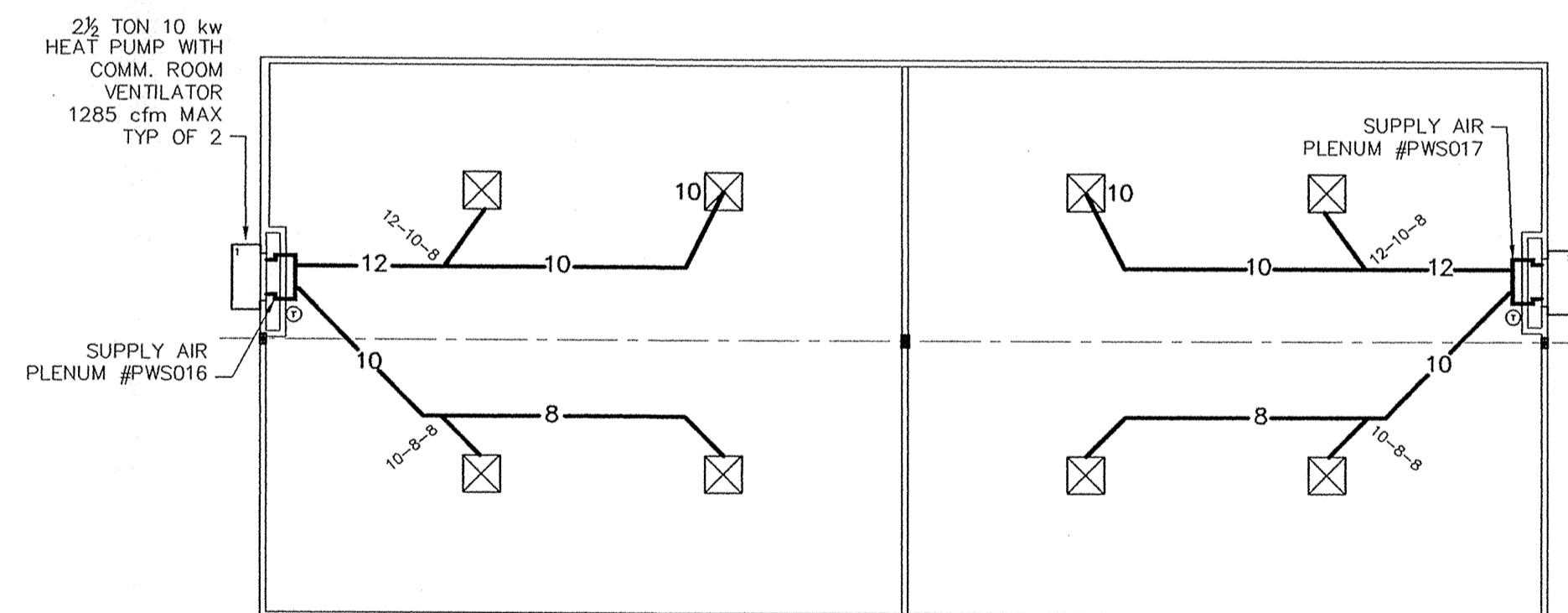


## REFLECTED CEILING PLAN

1/8" = 1'-0"

### MECHANICAL NOTES:

1. DUCT MATERIAL IS 26 GA. GALV. AND FLEX DUCT. DUCTWORK SHALL BE SUPPORTED PER UMC CHAPTER 6.
2. MATERIAL IN DUCTS SHALL HAVE A FLAME SPREAD INDEX OF LESS THAN 25, SMOKE DEVELOPMENT OF 50 PER UMC CHAPTER 6.
3. SEAL TRANSVERSE JOINTS IN ACCORDANCE WITH UMC CHAPTER 6.
4. WHEN ISOLATION SLEEVES ARE USED AT LINE CONNECTIONS TO PLENUMS, THEY SHALL COMPLY WITH UMC CHAPTER 6.
5. 8" AND 10" DIFFUSERS WITH MANUAL DAMPERS, TYPICAL AS NOTED ON PLAN.
6. MINIMUM 1650 CFMs OUTSIDE AIR REQUIRED PER WS VIAQC CHAPTER 3 AND TABLE 3-4.



## MECHANICAL PLAN

1/8" = 1'-0"

	QTY.	SIZE	DESCRIPTION
H.V.A.C.	2	2.5 TON	10 kW WALL HUNG HEAT PUMP WITH COMMERCIAL ROOM VENTILATOR
INDOOR THERMOSTAT	2		White Rodgers #F93-380 w/ MICROPROCESSOR- 7 DAY PROGRAMMABLE AUTOMATIC SETBACK- DEADBAND CONTROL
OUTDOOR THERMOSTAT	2		CMH-14

7-30-04	PRELIM REVIEW - SP	LDG
8-6-04	FILE COPY REVIEW - SP	LDG
DATE	REVISION	BY

COPYRIGHT 2004, BLAZER INDUSTRIES, INC. THIS MATERIAL IS THE EXCLUSIVE PROPERTY OF BLAZER INDUSTRIES, INC. AND SHALL NOT BE REPRODUCED, USED, OR DISCLOSED TO OTHERS EXCEPT AS AUTHORIZED BY THE WRITTEN PERMISSION OF BLAZER INDUSTRIES.



MOBILE  
28 x 64  
OR, WA, ID

**Classroom for:  
Lease Unit**  
Pacific Mobile

04 BLMP-07, A1

TITLE: T-BAR/MECH  
Issue Date: 8-6-04  
DRAWN BY: KWA  
DATE: 7-20-04  
JOB NO: 12664-65

**M-1**