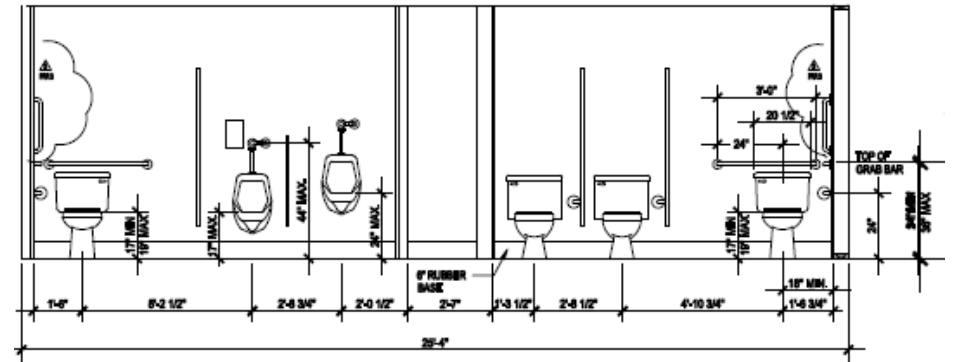
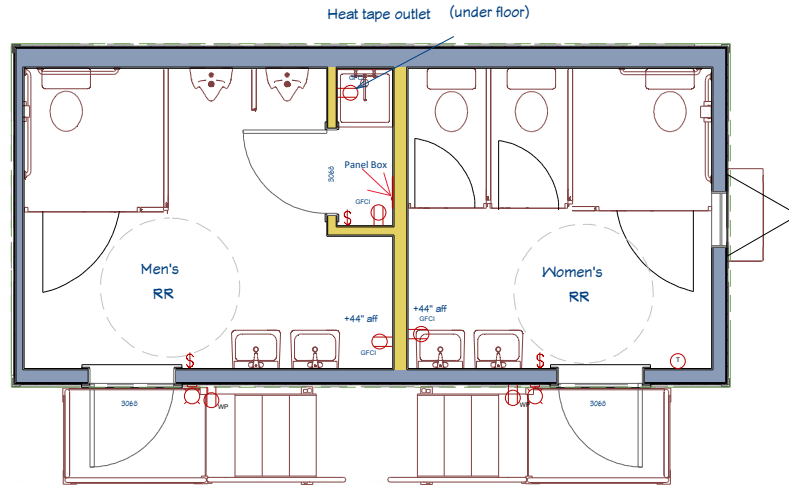
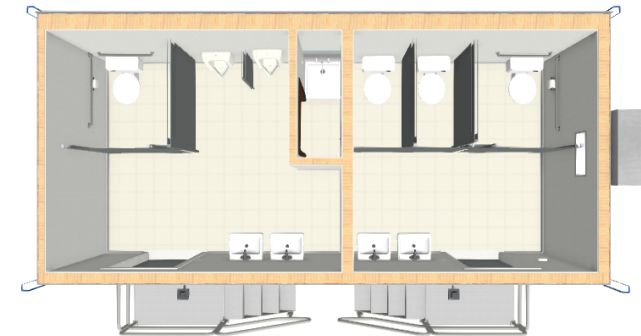


This drawing is the property of Pacific Mobile Structures, Inc. and may not be duplicated without approval. Actual features may vary due to available inventory.



PANEL SCHEDULE						PANEL No. MDP	
MOUNTING: FLUSH 120/240 VOLTS 1 PHASE WIRE: 4						LOCATION: INTERIOR	
ENCLOSURE: NEMA 3R 100 AMPS W/ MAIN BREAKER 10,000 AIC							
CK	DESCRIPTION	KVA	P	A	B	DESCRIPTION	CK
1	HEAT PUMP	3.3	2	40	*	30 1 1.5 WATER HEATER	2
3		3.3			*	20 1 1.5 HEAT TRACE	4
5	LIGHTS/FANS	0.6	1	20	*	20 1 0.7 GEN RECEIPT	6
7	SIGN LIGHT	1.2	1	20	*		8
9					*		10
11					*		12
13					*		14
15					*		16
17					*		18
CONTRIBUTION FROM PANEL		TOTAL CONNECTED		KVA		12.1	
PHASE A:		6.1		AMPS		50.5	
PHASE B:		6.0		KVA:		12.7	
SUBTOTAL:		12.1		AMPS:		62.9	



Shown w/optional skirting

**LEGEND** EP Panel Box    ⓧ Porch Light    Ⓣ Thermostat    Ⓢ Duplex Outlet    Ⓢ Light Switch    Ⓢ Empty data box    — Perm. Interior wall    - - - - - Temp. Interior wall

## FEATURES

- Outrigger Chassis w/hitch
- Sheet vinyl flooring
- FRP interior wall covering
- Fixed Ceiling
- 4' fluorescent strip light
- Endwall HVAC w/ducted supply - 100% fresh air
- Duro-Last membrane roofing
- LP SmartPanel siding
- Grey siding / Blue trim
- No windows on this unit
- 3068 Painted steel exterior doors w/closer, passage, and deadbolt