

# Phoenix Data Center

**28,056-Square-Foot of  
Versatile Space for Offices,  
Meetings, and Operations**

**Located in Waddell, AZ**



**Time to Complete: 153 Days from delivery to occupancy.**

## **Project Overview:**

Pacific Mobile Structures collaborated closely with Layton Construction, Sun West Mobile Modular, and Phoenix Modular to deliver a complex and extensive modular solution for a major data center project in Arizona. This location was selected for its low-cost power and minimal environmental risks, making it an ideal setting for a high-demand, time-sensitive build. The facilities we provided, totaling 28,056 square feet, were tailored to support multiple functions, enhancing both on-site operations and worker comfort during the data center's construction phase.

Pacific Mobile Structures leveraged its established relationship with Layton Construction to deliver a solution aligned with their standards and expectations. By fostering open communication and a collaborative approach with all partners, including Sun West Mobile Modular and Phoenix Modular, we ensured every aspect of the project met the high standards required. With the newest modular equipment available in Arizona, we met the need for large, complex structures within a tight timeline. We supplied a variety of building sizes and configurations, providing adaptable spaces for diverse uses such as offices, conference rooms, first-aid facilities, and restrooms.

The buildings supplied for this project included a wide range of sizes: 72x60, 48x60, 36x60, three 24x60 buildings, four 14x66 buildings, two 12x60 buildings, one 12x44 building, and three 12x40 restroom facilities. These buildings were used for essential purposes such as owners' offices, engineers' offices, conference spaces, safety trailers, a first-aid trailer staffed with medical personnel, a lunchroom, and restrooms. The project's complexity and scale required a significant number of buildings and customization, with rapid production and delivery beginning on May 29, 2024, and concluding by October 29, 2024.

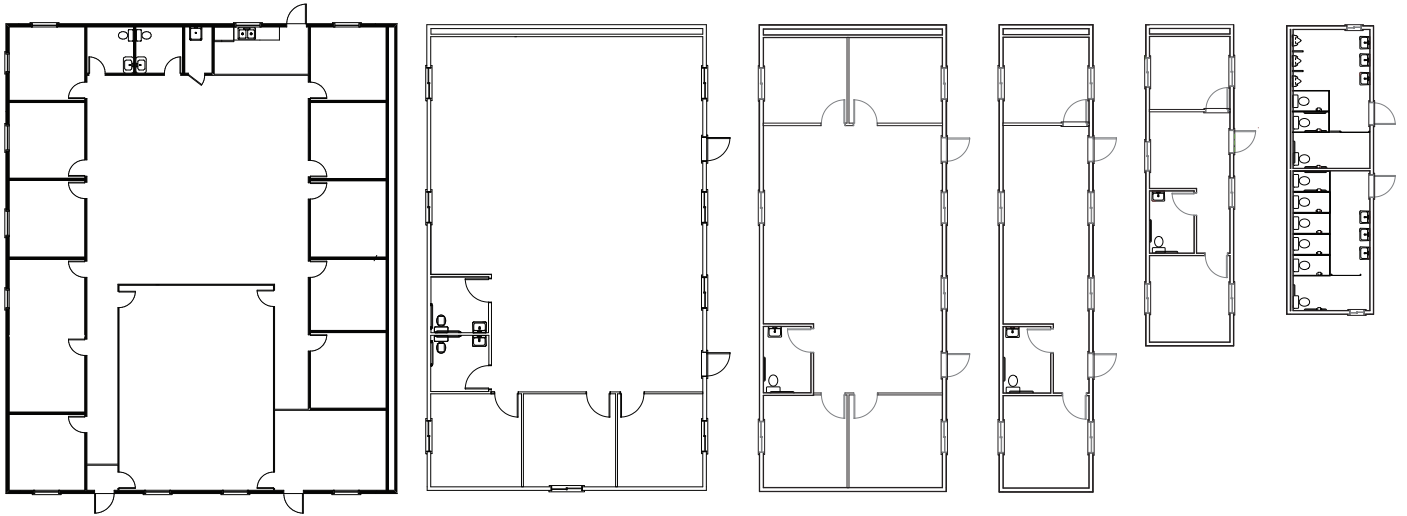
Pacific Mobile Structures delivered a modular solution that exceeded expectations, providing the large-scale and flexible spaces necessary to support the construction of this significant data center. Our ability to quickly deliver high-quality complexes allowed the project to stay on schedule and achieve its goals for this innovative build.

## **Highlights:**

- Large-scale modular solution (28,056 sq. ft.)
- Diverse building functions (offices, conference rooms, restrooms, etc.)
- Variety of building sizes and configurations
- Collaboration with key industry partners
- Fast turnaround (delivered in five months)
- Use of the newest modular equipment in Arizona
- Custom-tailored to specific needs
- Essential support facilities, including first-aid and safety trailers
- Rapid production and delivery timeline
- Enhanced on-site operations and worker comfort



# Phoenix Data Center



My experience with Pacific Mobile buildings and service has been excellent. From setup to move-in ready, everything was seamless and efficient. Their customer service is outstanding, always responsive, and helpful throughout the entire process. I highly recommend them!

- Scott Shafer, Layton Construction

