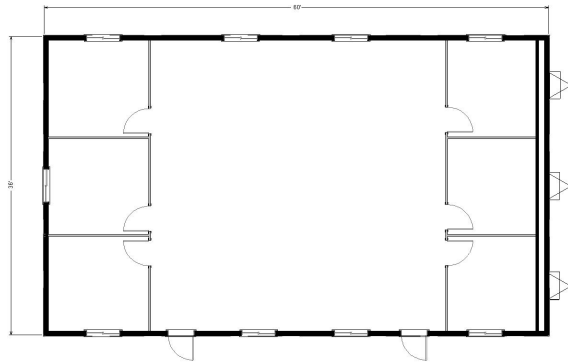
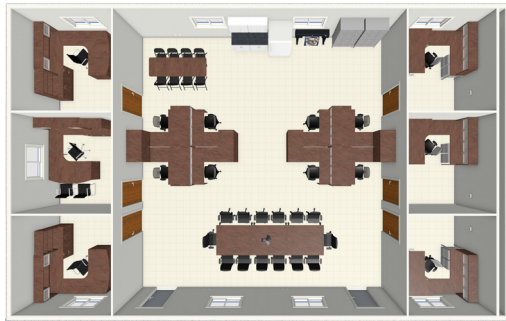
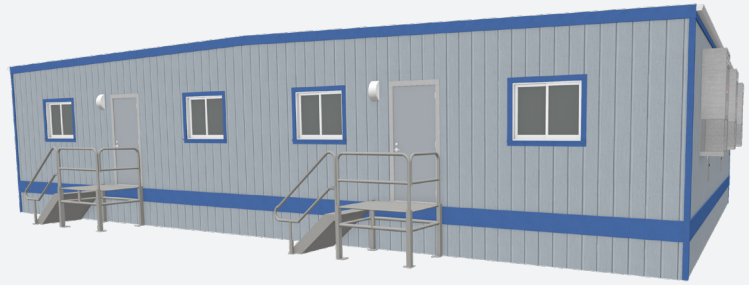


# 36' x 60'

## Mobile Office



### Dimensions

- Hitch is approx. 4' long.
- 7' 6" to 8' ceiling height.
- Built to the State Commercial Building Code.

### Electrical

- Fluorescent or LED ceiling lights.
- Electrical outlets.
- Light switches.
- Load center/breaker panel box; in most cases 220/240 volt, 125 amp breaker. Confirm with your local sales representative.

### Windows/Doors

- Horizontal sliding windows.
- Steel exterior door w/ standard deadbolt lock.
- Theft prevention accessories; available upon request.

### Exterior

- Exterior wood siding.
- I-beam frame.
- Standard drip rail gutters.

### Heating/Cooling System

- Ducted heating/cooling combination unit.
- Programmable thermostats.
- Plenum wall for noise reduction.

### Interior

- Paneled or vinyl wrap gypsum interior walls.
- Commercial grade carpet tiles.
- Acoustical sound dampening ceiling tiles.
- Optional interior walls shown (may include additional costs upon request).

### Customize Your Mobile Office!

Pacific Mobile offers a wide array of furniture, accessories, and security packages for a turnkey building that's ready for you and your team to get to work the moment you step onsite.



Storage Containers  
Extra Security Features  
Furniture  
Appliances  
Filing Cabinets

OSHA / ADA Ramps  
Modular Walls  
Carpet Tiles  
Coffee Bar  
And Much More!